

## REQUEST for QUALIFICATIONS

### ALL PROSPECTIVE ARCHITECTURAL / ENGINEERING / GENERAL CONTRACTING FIRMS

**INVITATION for QUALIFICATIONS  
16C/D RESIDENTS' RESOURCE CENTER  
GHS-FD Project #: F2018013  
21502**

Grady Health System Department of Facilities Development is soliciting "Qualifications" A/E/C services for the medium renovation of the 16<sup>th</sup> floor Residents' Resource Center. A brief overview of the project is further into this document.

The project will be located in the main hospital.

- 80 Jesse Hill Jr. Drive, SE, Atlanta, GA 30303.

All A/E/C firms planning to partner and submit a proposal must be pre-qualified. To become qualified, please submit a qualifications package meeting the following requirements:

- List of three to five design-build projects of similar size and scale.
- Brief narrative of each of the referenced projects.
- Organization chart of your team
- One page CV or resume of each team member.

Additionally, registration with VendorMate, and TIER 1 Diversity forms must be completed in order to be considered pre-qualified.

Please submit qualifications to Patrina Crayton by email at [pecrayton@gmh.edu](mailto:pecrayton@gmh.edu) by c.o.b. October 28<sup>th</sup>. You will be notified by November 2<sup>th</sup> if you have met the threshold for being pre-qualified.

**Scope of work:**

Is defined by a 95% CD set of drawings (attached with this RFQ) and the narrative below explaining changes to the design.

The Resource center will include:

**Computer Workstations/Study Carrels** – New Study Carrels will expand the existing Study Carrel area.

**Team/Collaborative Meeting Rooms** – Meeting space will replace part of the existing Lounge Area. Three (3) glass walled Meeting Rooms will each contain a table with seating for 4-6 people.

**Breakroom** - The renovation of this space includes new cabinets, fixtures, finishes, and counter height table with stools.

**Casual Lounge Space** - This area will contain sofas and Flat Screen TVs for socializing and relaxing.

**Locker Area** - New 4-tier lockers will replace existing 2-tier lockers.

**Men’s Restroom** - Existing Restroom 16C004 is unisex. As a result, only 1 person uses it at a time. The renovation will include new fixtures and finishes.

**Women’s Restroom** – Existing Storage Room 16D004 will become a Women’s Restroom.

**Computer Workstations/Study Carrels** – New Study Carrels will expand the existing Study Carrel area.

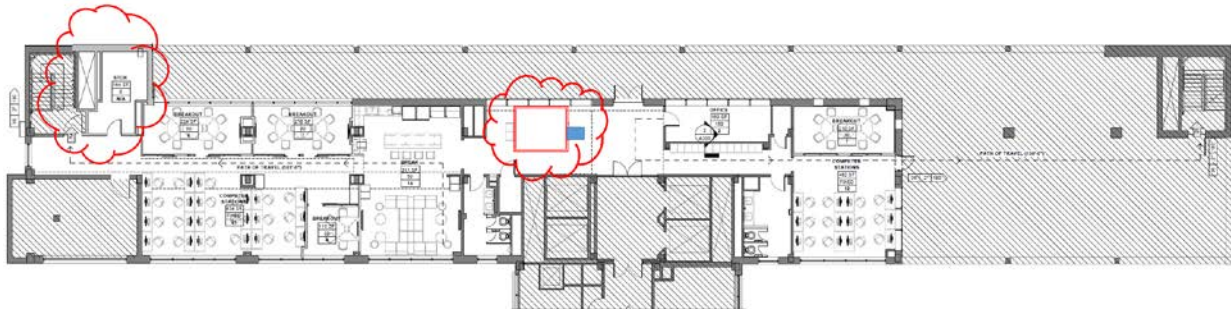
**Additional Considerations** - LED lights will replace existing lighting throughout. Existing Fan Room 16C001 has Air Conditioning equipment only with heating provided by radiators (to be removed). New HVAC equipment is included as part of the renovation.

**DRAWINGS NEEDED TO SHOW THE FOLLOWING DESIGN CHANGES**

**Accessible Restroom** – The drawings show this restroom located in part of Room 16C002 an existing Data Room. Instead, the design change includes:

- existing Data Room 16C002 will be out of scope and remain in current state.
- a new Accessible Restroom will be located in an area near the lockers and the entrance Resource Center. (see plan below).

Drawings needed to construct the new restroom to be submitted as part of this Contract.



## **Local, Small Economically Disadvantaged Business Utilization**

It is an overall objective of The Grady Memorial Hospital Corporation, d/b/a Grady Health System (GHS) to encourage involvement by local, small, economically disadvantaged contractors and suppliers in business activities generated by GHS®, while assuring that such activities will be conducted in accordance with all applicable laws. It is the declared policy and intent of GHS® to strive to maximize participation of local, small, economically disadvantaged businesses through all business contracting opportunities. GHS® is committed to ensuring that local, small, economically disadvantaged businesses are given every opportunity to participate in contracting opportunities.

GHS® prohibits discrimination on the basis of race, color, gender, religion, national origin, or disability in connection with employment of any person, or the award of any contract. GHS® will provide equal opportunities without regard to race, color, gender, religion, national origin, or disability, by requiring that any vendor doing business with GHS® provide equal opportunity to persons and businesses employed by, or contracting with the supplier of products and services to GHS®.

GHS® expects that the policies, programs and practices of its vendors/contractors are carried out in an equitable fashion and that local (Fulton County, DeKalb County, State of Georgia), small and economically disadvantaged business enterprises are afforded an equitable opportunity to share in contract/subcontract opportunities.

**These documents are considered a part of and should be submitted with the qualifications package. Failure to provide the requested information will result in the proposal being determined non-responsive.**

- **Screen shot or copy of Vendormate certificate**
- **Completed TIER 1 Diversity form**
- **Certificate verifying TIER 1 diversity.**
- **List of three to five design-build projects of similar size and scale.**
- **Brief narrative of each of the referenced projects.**
- **Organization chart of your team**
- **One page CV or resume of each team member.**

**PROCESS FOR SELECTION**

A selection team will evaluate each qualification submitted and score the team member. The scores will be made available upon request for your team following pre-qualification

GHS-FD reserves the unqualified right to request additional information or meetings with any architect, engineer, or contractor.

Your company wishes to be pre-qualified as a:

- Architect
- Engineer
- General Contractor

NAME: \_\_\_\_\_

TITLE: \_\_\_\_\_

PHONE: ( ) \_\_\_\_\_

EMAIL: \_\_\_\_\_

SIGNATURE: \_\_\_\_\_

DATE: \_\_\_\_\_