

SDT01	TITLE SHEET
SDG01	KEY PLAN
CDL601	LIFE SAFETY PLAN
CDIC01	INFECTION CONTROL RISK MITIGATION PLAN

SDD101 DEMOLITION PLAN
SDD401 DEMOLITION REFLECTED CEILING PLAN

SDA001	PARTITION TYPES & DOOR TYPES
SDA101	FLOOR PLAN
SDA401	REFLECTED CEILING PLANS
SDA601	ENLARGED PLAN & INTERIOR ELEVATIONS
SDA602	INTERIOR ELEVATIONS & DETAILS
SDA603	MILLWORK DETAILS & SECTIONS
SDA701	FINISH PLANS
SDA702	WALL PROTECTION PLAN (?)

SDF101 FURNITURE PLANS

CDM001 MECHANICAL LEGEND & SPECIFICATIONS
CDM002 DETAILS & SCHEDULES
CDM101 MECHANICAL PLANS

CPD001 PLUMBING LEGENDS, SPECIFICATIONS & SCHEDULES
CPD002 DETAILS
CPD101 DOMESTIC WATER PLAN
CPD102 SANITARY PLAN
CPD103 RISER DIAGRAMS

~~GPFOOI FIRE PROTECTION~~

CDE001	ELECTRICAL LEGEND, NOTES, & SCHEDULE
CDE002	ELECTRICAL DETAILS
CDE003	ELECTRICAL SCHEDULES
CDE101	LIGHTING PLANS
CDE201	POWER PLANS
CDE402	FIRE ALARM PLANS
CDE501	LOW VOLTAGE PLANS

APPLICABLE CODES/YEAR:
 FGI GUIDELINES FOR DESIGN AND CONSTRUCTION OF HEALTHCARE
 FACILITIES / 2014 ED.
 LIFE SAFETY CODE, NFPA 101 / 2012 ED. (W/GEORGIA STATE FIRE MARSHAL
 AMENDMENTS)
 INTERNATIONAL BUILDING CODE / 2012 ED. (W/GEORGIA AMENDMENTS)
 INTERNATIONAL MECHANICAL CODE / 2012 ED. (W/GEORGIA AMENDMENTS)
 INTERNATIONAL PLUMBING CODE / 2012 ED. (W/GEORGIA AMENDMENTS)
 NATIONAL ELECTRICAL CODE / 2014 ED. (W/GEORGIA AMENDMENTS)
 INTERNATIONAL FIRE CODE/2012 ED. (W/GEORGIA AMENDMENTS)
 INTERIOR FINISHES PER NFPA 101 / 2012 ED.
 GEORGIA ACCESSIBILITY CODE: GAC 120-3-20

NOTE:
ALL RENOVATION WORK IS LOCATED WITHIN THE EXISTING SPACE AS
INDICATED ON THE KEY PLAN.

GHS CONTACT:
GEORGE SMITH
ARCHITECTURAL PROJECT MANAGER
FACILITIES DEVELOPMENT
V: 404/616-3228
E-DRESS: GCSMITH@GMH.EDU

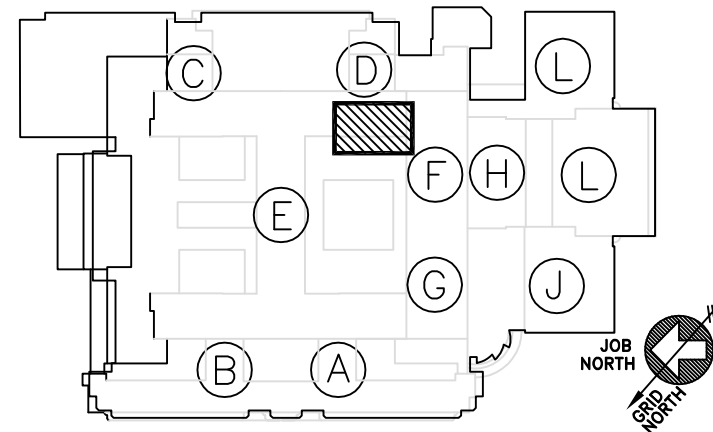
NEUROSURGERY RESIDENTS'
OFFICES/ON-CALL
THIRD FLOOR / D-WING
GRADY MEMORIAL HOSPITAL
(GHS PN JAZZID-1483)

PROJECT AND CODE SUMMARY:

1. OWNER: GRADY HEALTH SYSTEM
80 JESSE HILL, JR., DRIVE SE
ATLANTA, GEORGIA 30303
2. PROJECT ADDRESS: THIRD FLOOR / D-WING
GRADY MEMORIAL HOSPITAL
80 JESSE HILL, JR., DRIVE SE
ATLANTA, GEORGIA 30303
3. PROJECT TYPE: RENOVATION
4. OCCUPANCY CLASSIFICATION GROUP B - BUSINESS IN HEALTHCARE
5. CONSTRUCTION TYPE I (332)
3. AREA OF WORK: 620 S.F.
4. TOTAL BUILDING AREA: 2 MILLION SQ.
5. TOTAL STORIES: 22, INCLUDING BASEMENT
6. FULLY SPRINKLERED
7. OCCUPANT SEPARATION: EXISTING OFFICE SUITE - 2 HOUR
8. PROJECT DESCRIPTION: SCOPE OF WORK:
EXISTING LIFE SAFETY CONDITIONS, DEVICES, AND EQUIPMENT AFFECTED;

LOCATION PLAN:

AREA OF WORK: 620 S.F.



APPROVALS:

[illegible]

FOR PRICING ONLY
NOT FOR CONSTRUCTION

[illegible]

Grady
DEPARTMENT OF FACILITIES MANAGEMENT
80 JESSE HILL, JR., DRIVE SE
ATLANTA, GEORGIA 30335
V: 404.616.4291
F: 404.616.3355

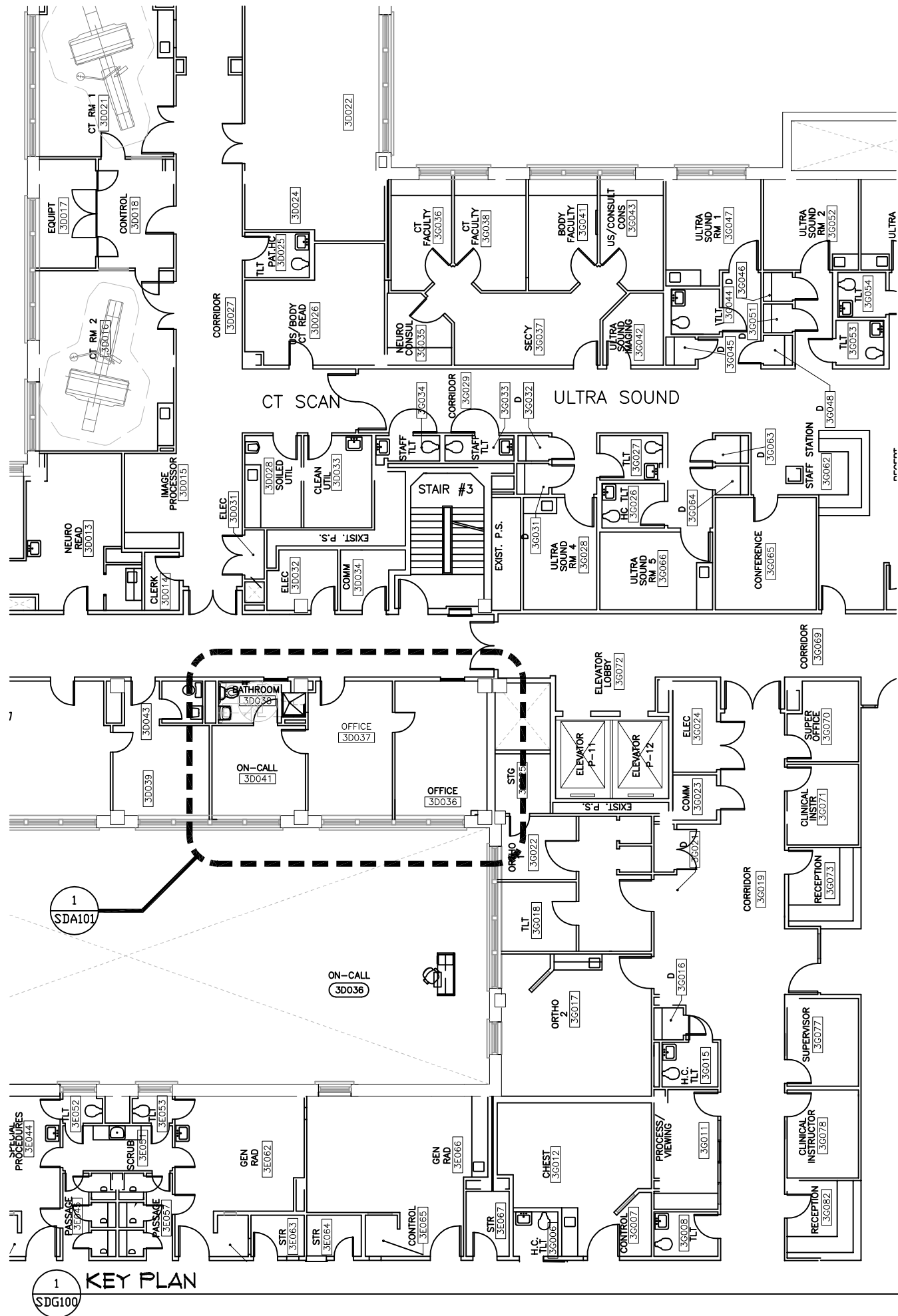
NEUROSURGERY RESIDENTS' OFFICES/ON-CALL

PROJECT LOCATION:
THIRD FLOOR / D-WING
GRADY MEMORIAL HOSPITAL

PN: JAZZID-1483	Z S T R I C T I O N
SCALE: N/A	
DRAWN BY: gcs3	
DATE: 7/5/17	

DRAWING TITLE:
TITLE SHEET
APPROVALS:
SHEET NUMBER:
SDT001

NOT FOR CONSTRUCTION



1
SDG100

KEY PLAN

1/16" = 1'-0"

FOR PRICING ONLY
NOT FOR CONSTRUCTION

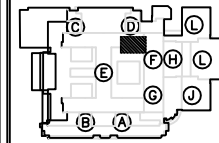
No.	REVISION/SUBMISSION:	DATE:

PN: JAZZID-1483
SCALE: 1/16" = 1'-0"
DRAWN BY: gcs3
DATE: 7/5/17

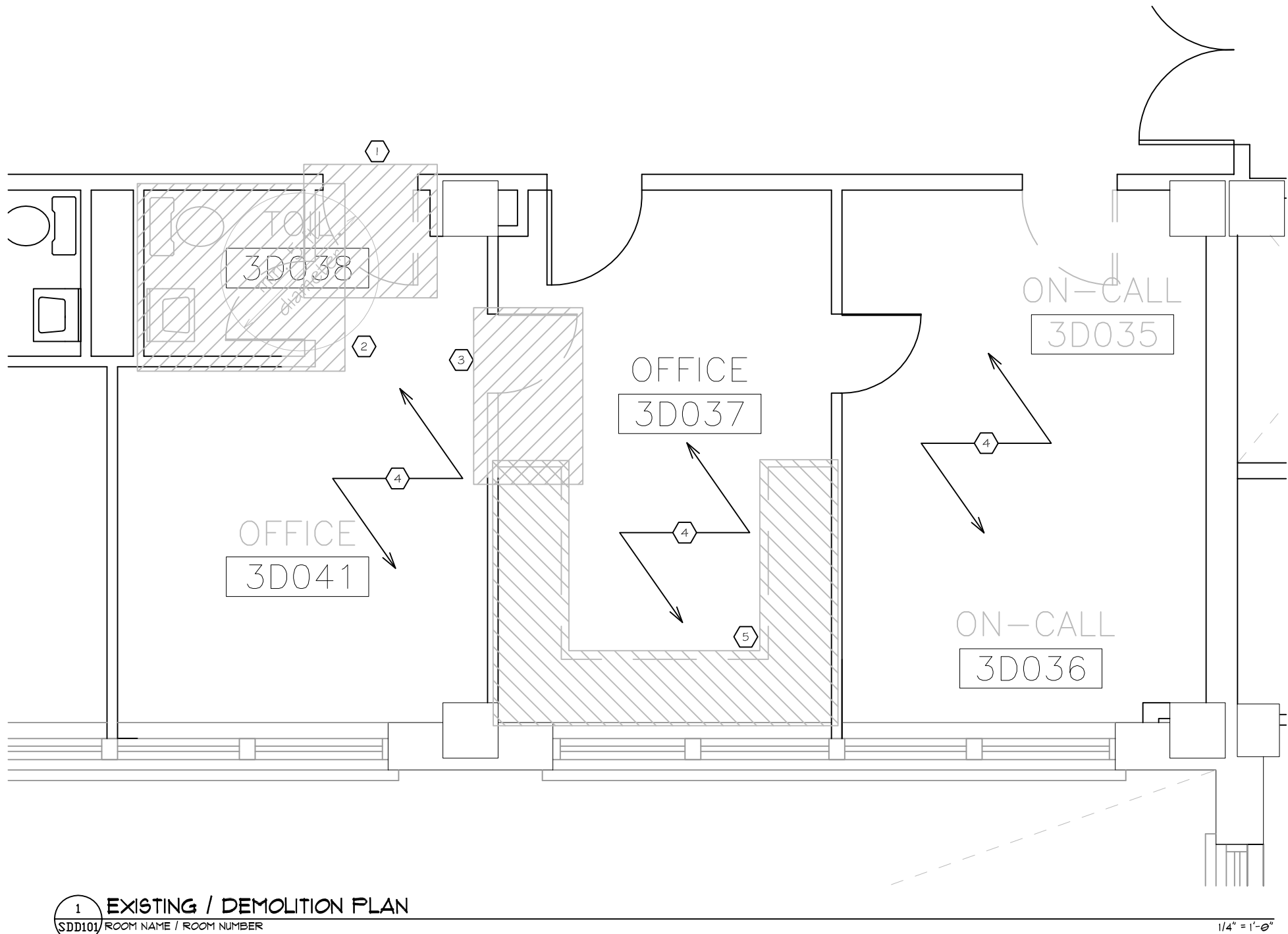
DRAWING TITLE:
KEY PLAN
APPROVALS:
SHEET NUMBER:
SDG001

PROJECT NAME:
NEUROSURGERY RESIDENTS' OFFICES/ON-CALL
PROJECT LOCATION:
THIRD FLOOR / D-WING
GRADY MEMORIAL HOSPITAL

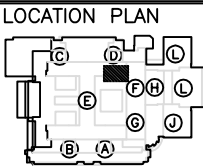
LOCATION PLAN



NOT FOR CONSTRUCTION



- DEMOLITION NOTES:**
- 1. PREP DOOR & FRAME FOR INTERIOR FIRING;
 - 2. REMOVE DOOR, FRAME, & SELECTIVELY DEMOLISH PARTITION @ RESTROOM;
REMOVE PLUMBING FIXTURES;
REMOVE FINISHES;
 - 3. REMOVE DOOR, FRAME, & SELECTIVELY DEMOLISH PARTITION FOR NEW DOOR & FRAME - SEE A101
 - 4. REMOVE FLOORING THROUGHOUT;
 - 5. REMOVE MILLWORK COUNTERS & BASE CABINETS;



PROJECT NAME:
NEUROSURGERY RESIDENTS' OFFICES/ON-CALL

PROJECT LOCATION:
THIRD FLOOR / D-WING
GRADY MEMORIAL HOSPITAL

PN:
JAZZID-1483

SCALE:
1/4" = 1'-0"

DRAWN BY:
gcs3

DATE:
7/5/17

DRAWING TITLE:
FLOOR PLANS

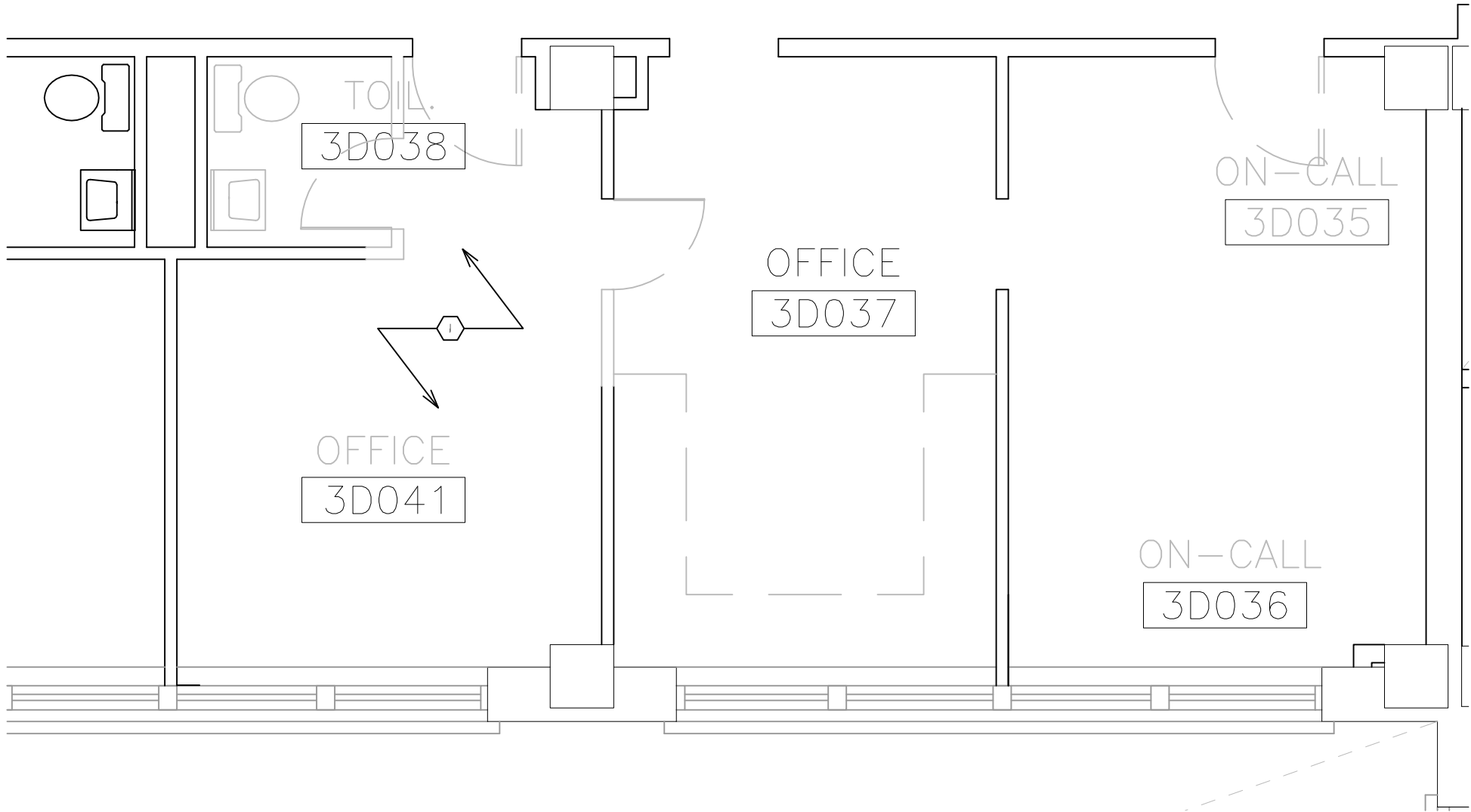
APPROVALS:

SHEET NUMBER:
SDD101

FOR PRICING ONLY
NOT FOR CONSTRUCTION

No.	REVISION/SUBMISSION:	DATE:

NOT FOR CONSTRUCTION



1 REFLECTED CEILING DEMOLITION PLAN
SDD401 EXISTING OFFICES

DEMOLITION KEY NOTES:
1. REMOVE ACT SYSTEM THROUGHOUT;

Grady

DEPARTMENT OF FACILITIES MANAGEMENT
80 JESSE HILL, JR., DRIVE SE
ATLANTA, GEORGIA 30335
P: 404.616.4391
F: 404.616.3355

LOCATION PLAN

PROJECT NAME:
NEUROSURGERY RESIDENTS' OFFICES/ON-CALL

PROJECT LOCATION:
THIRD FLOOR / D-WING
GRADY MEMORIAL HOSPITAL

PN:
JAZZID-1483

SCALE:
1/4" = 1'-0"

DRAWN BY:
gcs3

DATE:
7/5/17

DRAWING TITLE:
DEMO RCP

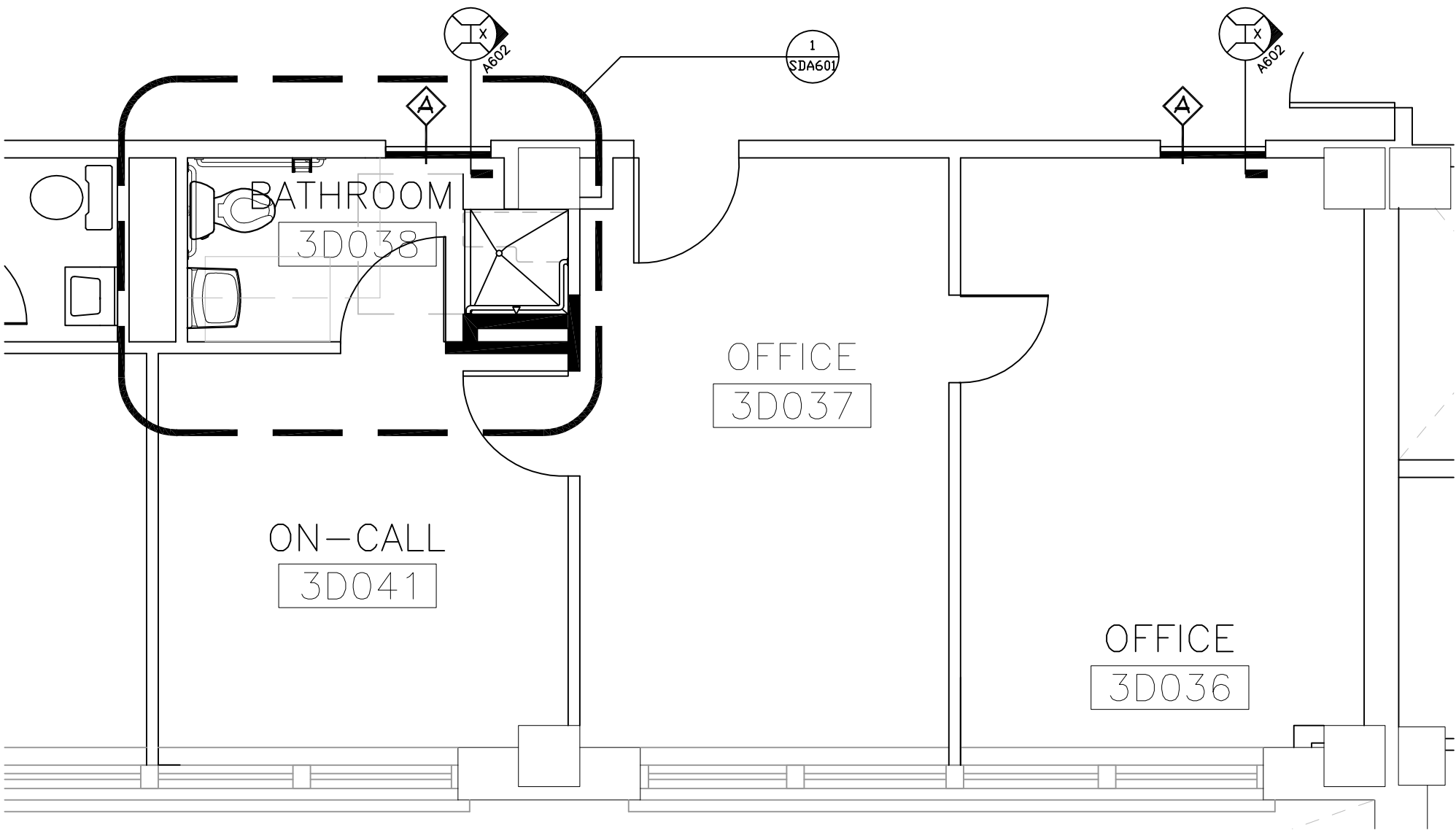
APPROVALS:

SHEET NUMBER:
SDD401

NOT FOR CONSTRUCTION

FOR PRICING ONLY
NOT FOR CONSTRUCTION

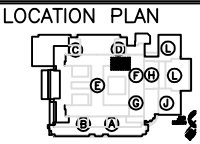
No.	REVISION/SUBMISSION:	DATE:



1 FLOOR PLAN
SDA101 ROOM NAME / ROOM NUMBER

CONSTRUCTION NOTES:

1.



PROJECT NAME:
NEUROSURGERY RESIDENTS' OFFICES/ON-CALL

PROJECT LOCATION:
THIRD FLOOR / D-WING
GRADY MEMORIAL HOSPITAL

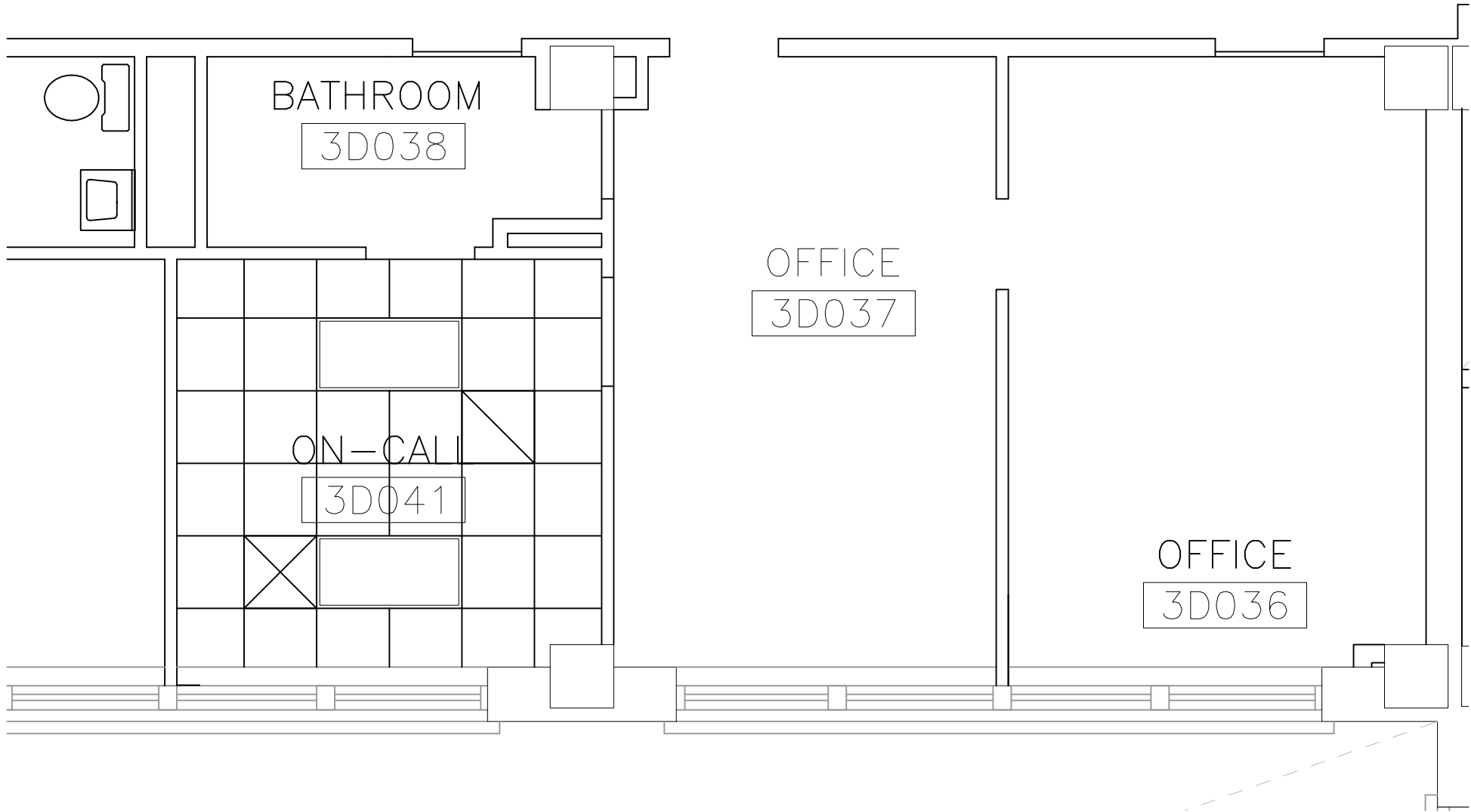
PN: JAZZID-1483
SCALE: 1/4" = 1'-0"
DRAWN BY: gcs3
DATE: 7/5/17

DRAWING TITLE:
FLOOR PLANS
APPROVALS:
SHEET NUMBER:
SDA101

FOR PRICING ONLY
NOT FOR CONSTRUCTION

No.	REVISION/SUBMISSION:	DATE:

NOT FOR CONSTRUCTION



1 REFLECTED CEILING PLAN
SDA401 EXISTING OFFICES

1/4" = 1'-0"

REFLECTED CEILING PLAN KEY NOTES:

1

Grady

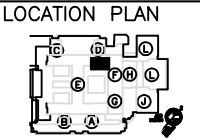
DEPARTMENT OF FACILITIES MANAGEMENT

80 JESSE HILL, JR., DRIVE SE

ATLANTA, GEORGIA 30335

V: 404.616.4391

F: 404.616.3355



PROJECT NAME:
NEUROSURGERY RESIDENTS' OFFICES/ON-CALL

PROJECT LOCATION:
THIRD FLOOR / D-WING
GRADY MEMORIAL HOSPITAL

PN:
JAZZID-1483

SCALE:
1/4" = 1'-0"

DRAWN BY:
gcs3

DATE:
7/5/17

DRAWING TITLE:
DEMO RCP

APPROVALS:

SHEET NUMBER:
SDA401

NOT FOR CONSTRUCTION

FOR PRICING ONLY
NOT FOR CONSTRUCTION

No.	REVISION/SUBMISSION:	DATE:



NEUROSURGERY RESIDENTS' OFFICES/ON-CALL

NEUROSURGERY RE
PROJECT LOCATION:
THIRD FLOOR / D-WING
GRADY MEMORIAL HOSPITAL

N:
JAZZID-1483

CALE:
AS NOTED

RAWN BY:
gcs3

DATE:
7/5/17

DRAWING TITLE:
LEV'S & DET'S

PPROVALS:

HEET NUMBER:

SDA602

NOT FOR CONSTRUCTION



CT

CT

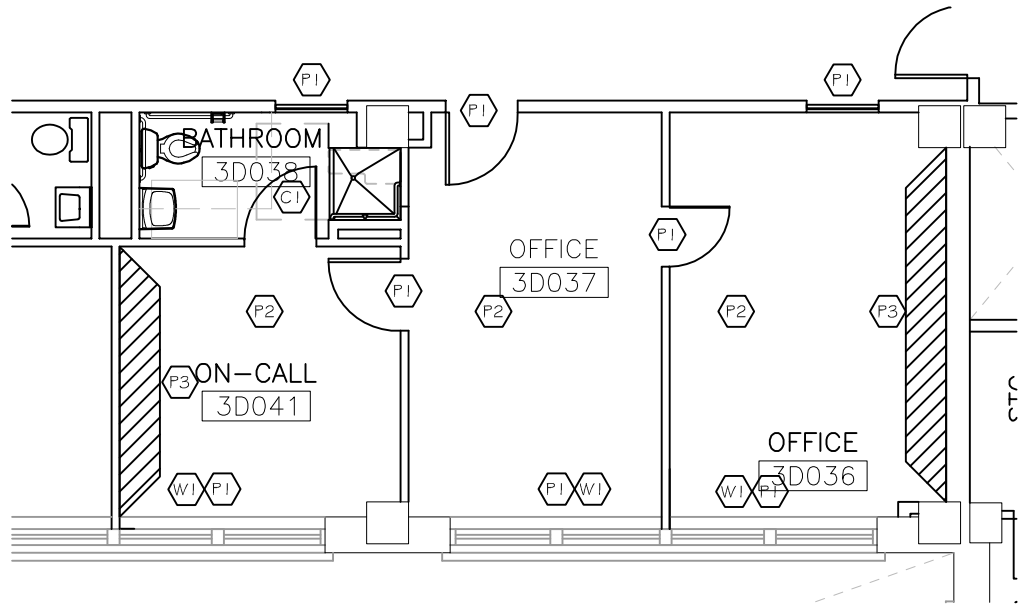
CT

1 INTERIOR ELEVATION

SDA602 3D038

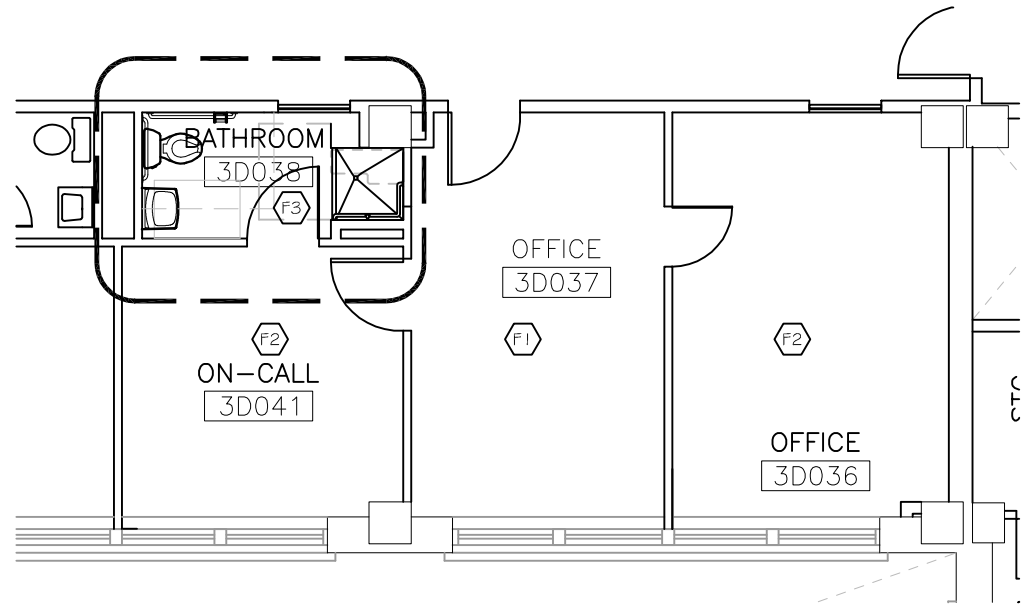
$$1/4'' = 1' - \theta''$$

SEE A701 FOR FINISH LEGEND & SPEC'S



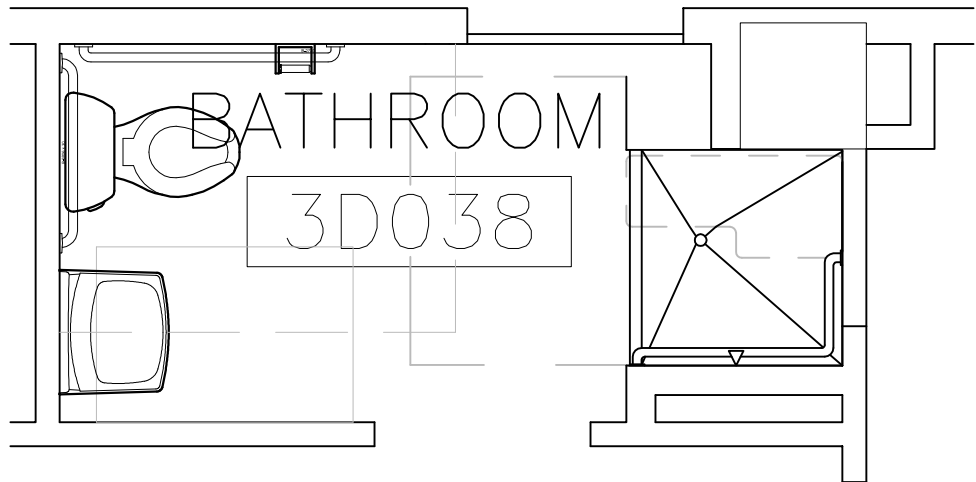
2 WALL FINISH PLAN
SDA701

1/8" = 1'-0"



1 FLOOR FINISH PLAN
SDA701

1/8" = 1'-0"



3 BATHROOM FINISH PLAN
SDA701 SEE ELEVATIONS SDA601 & SDA602 FOR WALL FINISHES

1/8" = 1'-0"

FINISH KEYNOTES:

F1 - VCT
F2 - VCT
F-3 CERAMIC FLOOR TILE

P1 - PAINT - BALANCED BEIGE - DOOR &
WINDOW FRAMES
P2 - PAINT - NATURAL CHOICE - NEUTRAL
COLOR UNO
P3 - PAINT - ACCENT WALL

C1 - CERAMIC WALL TILE - SEE A601 & A602

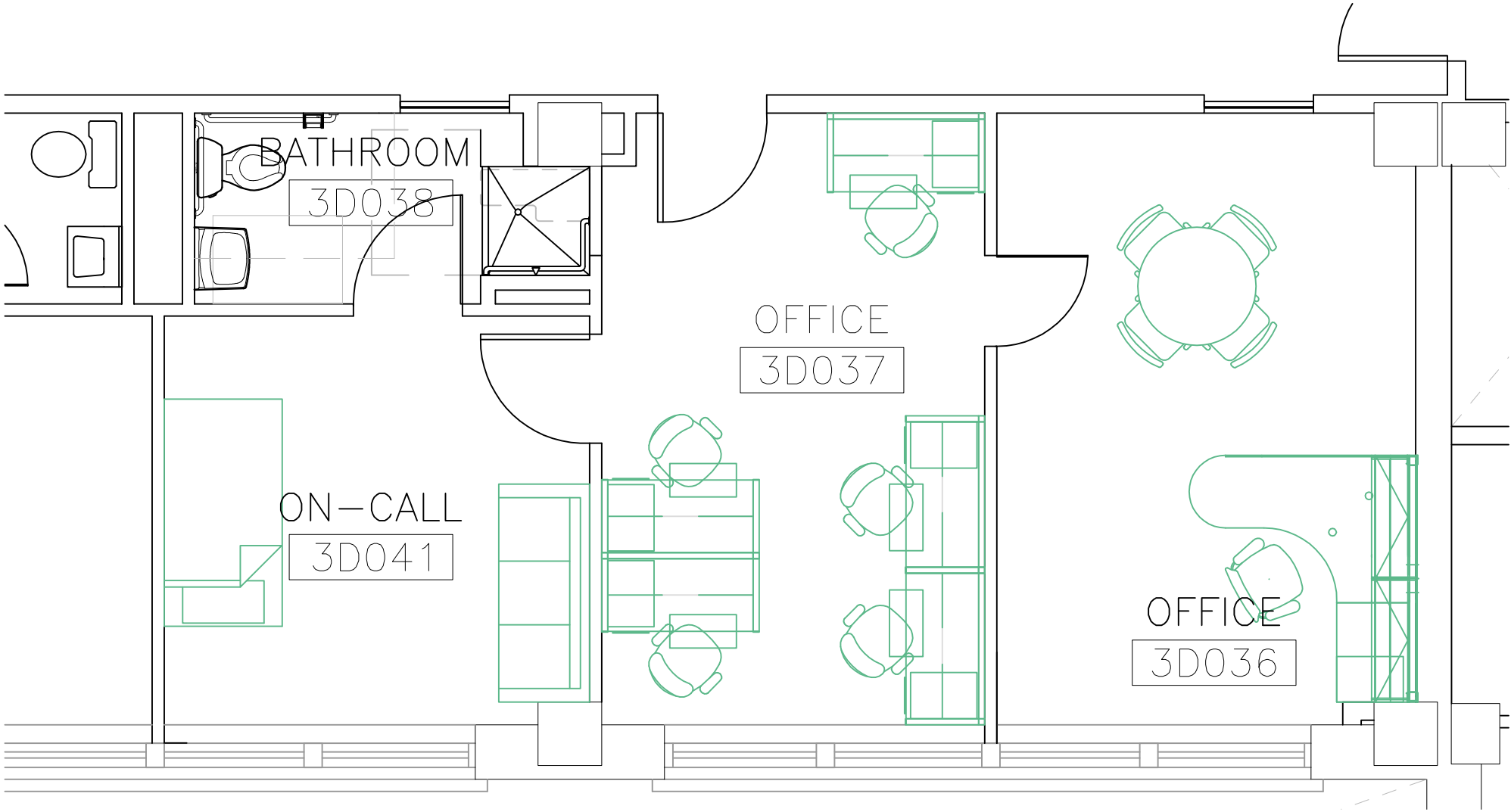
W1 - WINDOW TREATMENT

FINISH LEGEND:

**FOR PRICING ONLY
NOT FOR CONSTRUCTION**

No.	REVISION/SUBMISSION:	DATE:

NOT FOR CONSTRUCTION

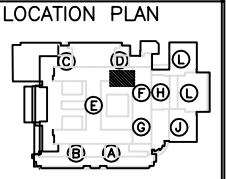


1 FURNITURE PLAN
SDF101 ROOM NAME / ROOM NUMBER

1/4" = 1'-0"

FURNITURE KEY-NOTES:

1.



PROJECT NAME:
NEUROSURGERY RESIDENTS' OFFICES/ON-CALL

PROJECT LOCATION:
THIRD FURNITURE / D-WING
GRADY MEMORIAL HOSPITAL

PN: JAZZID-1483
SCALE: 1/4" = 1'-0"
DRAWN BY: gcs3
DATE: 7/5/17

DRAWING TITLE:
FURNITURE PLANS
APPROVALS:
SHEET NUMBER:
SDF101

FOR PRICING ONLY
NOT FOR CONSTRUCTION

No.	REVISION/SUBMISSION:	DATE:

NOT FOR CONSTRUCTION