

REQUEST for QUALIFICATIONS

ALL PROSPECTIVE ARCHITECTURAL / ENGINEERING / GENERAL CONTRACTING FIRMS

INVITATION for QUALIFICATIONS

MEDICAL BEHAVIORAL UNIT

GHS-FD Project #:

21502

Grady Health System Department of Facilities Development is soliciting “Qualifications” A/E/C services for the conversion of behavioral offices to an 18 bed medical behavioral unit. A brief overview of the project is further into this document.

The project will be located in the clinic building of the main hospital.

- 80 Jesse Hill Jr. Drive, SE, Atlanta, GA 30303.

All A/E/C firms planning to partner and submit a proposal must be pre-qualified. To become qualified, please submit a qualifications package meeting the following requirements:

- List of three to five design-build projects of similar size and scale.
- Brief narrative of each of the referenced projects.
- Organization chart of your team
- One page CV or resume of each team member.

Additionally, registration with VendorMate and TIER 1 Diversity forms must also be completed in order to be considered pre-qualified.

Please submit qualifications to Nathan Jessee by email at npjessie@gmh.edu by c.o.b. July 21st. You will be notified by July 23rd if you have met the threshold for being pre-qualified.

MEDICAL BEHAVIORAL UNIT - \$ 11.75M



SCOPE DEFINITION:

- ENABLING PROJECTS
- BUILD NEW MED DISTURBED UNIT
- 18 + BEDS
- BREAKROOM
- NURSE OFFICE
- FAMILY CONSULT

NEW 18 BED MEDICAL BEHAV UNIT

COST ESTIMATE:

CONSTRUCTION	\$ 0
FLOORING	\$ 0
DESIGN	\$ 0
INCENTIVE	\$ 0
EQUIPMENT	\$ 0
FURNITURE	\$ 0
CONTINGENCY	\$ 0
SUBTOTAL	\$ 11.75M

Draft

TIMELINE:

TOTAL 38 WEEKS

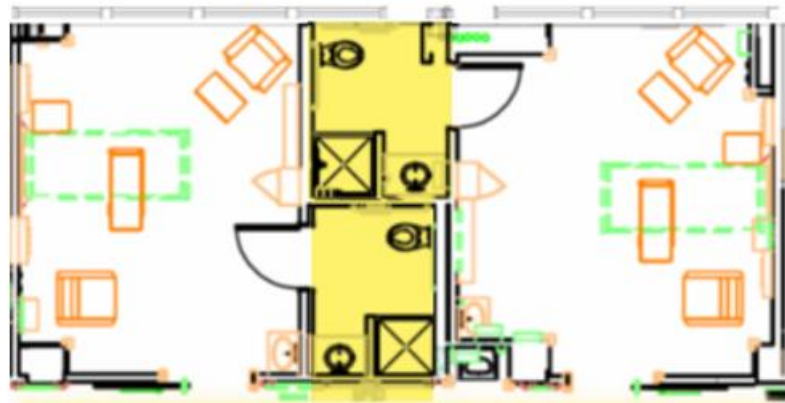
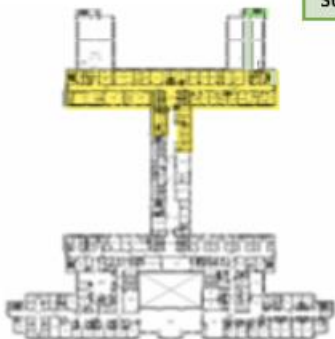
OFFICE MOVE 14-16 WEEKS

UNIT GO LIVE MAR 2022

THIS TIMELINE HAS NOT YET BEEN VALIDATED.

DISRUPTION:

- PERMANENT RELOCATION OF BEHAVIORAL OFFICES



ENABLING FOR MEDICAL BEHAV UNIT - \$ 11.75M



BEHAVIORAL HEALTH OFFICES

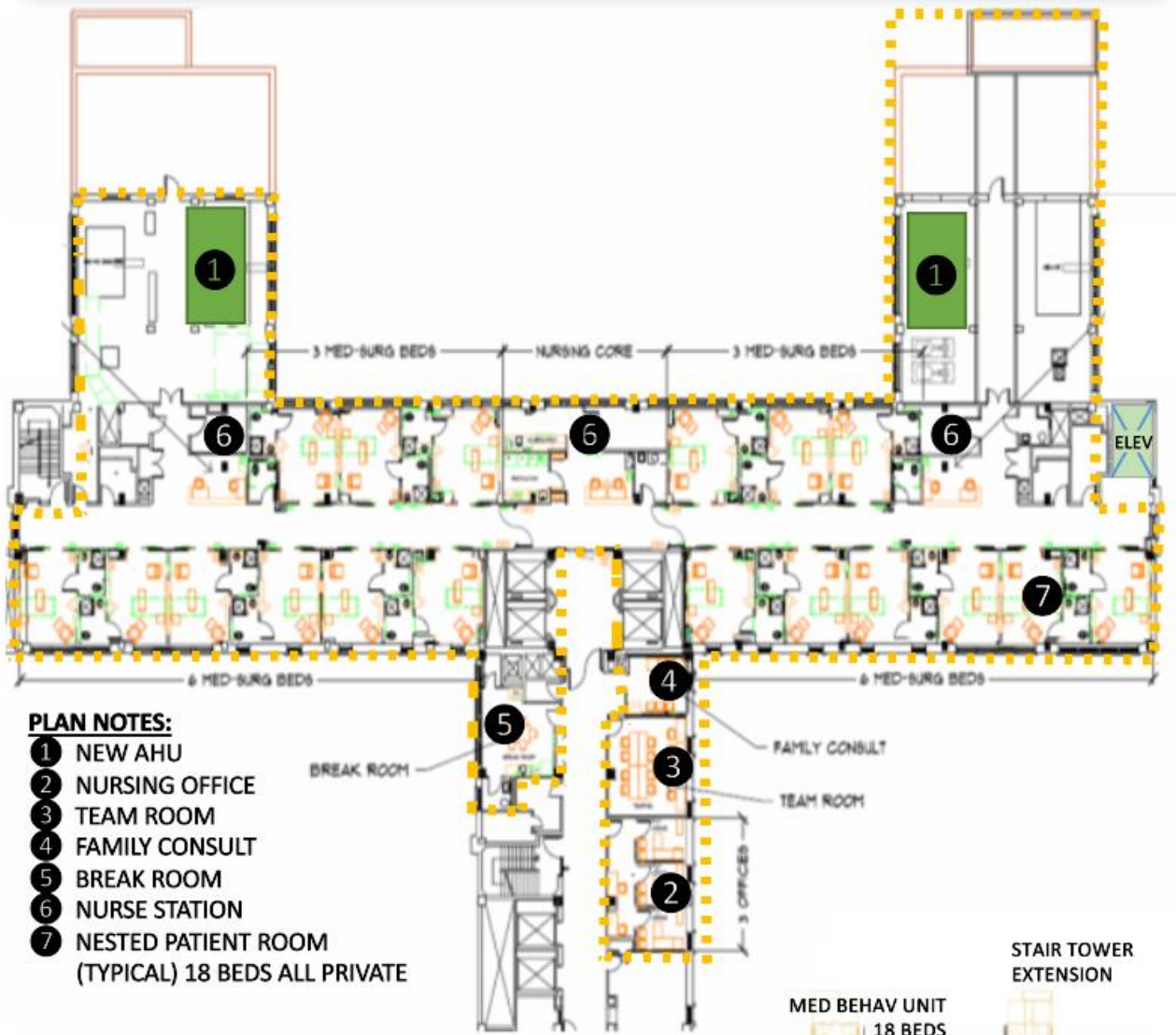
DESCRIPTION	HEADCOUNT
PRIVATE OFFICES	09
OPEN WORKSTATIONS	12

COST ESTIMATE:

CONSTRUCTION	\$ 0
FLOORING	\$ 0
DESIGN	\$ 0
INCENTIVE	\$ 0
EQUIPMENT	\$ 0
FURNITURE	\$ 0
CONTINGENCY	\$ 0
SUBTOTAL	\$ 11.75M

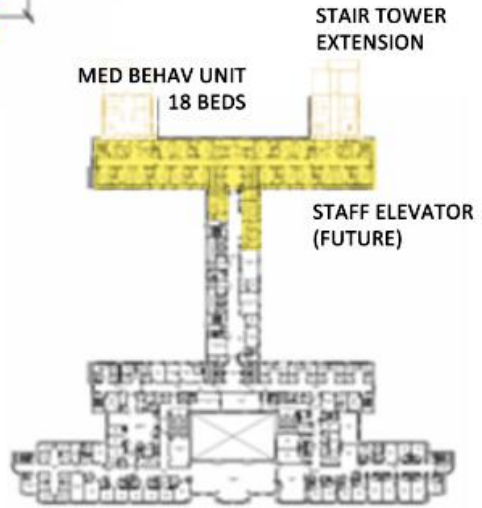


MEDICAL BEHAVIORAL UNIT - \$ 11.75M



PLAN NOTES:

- ① NEW AHU
- ② NURSING OFFICE
- ③ TEAM ROOM
- ④ FAMILY CONSULT
- ⑤ BREAK ROOM
- ⑥ NURSE STATION
- ⑦ NESTED PATIENT ROOM
(TYPICAL) 18 BEDS ALL PRIVATE



Local, Small Economically Disadvantaged Business Utilization

It is an overall objective of The Grady Memorial Hospital Corporation, d/b/a Grady Health System (GHS) to encourage involvement by local, small, economically disadvantaged contractors and suppliers in business activities generated by GHS®, while assuring that such activities will be conducted in accordance with all applicable laws. It is the declared policy and intent of GHS® to strive to maximize participation of local, small, economically disadvantaged businesses through all business contracting opportunities. GHS® is committed to ensuring that local, small, economically disadvantaged businesses are given every opportunity to participate in contracting opportunities.

GHS® prohibits discrimination on the basis of race, color, gender, religion, national origin, or disability in connection with employment of any person, or the award of any contract. GHS® will provide equal opportunities without regard to race, color, gender, religion, national origin, or disability, by requiring that any vendor doing business with GHS® provide equal opportunity to persons and businesses employed by, or contracting with the supplier of products and services to GHS®.

GHS® expects that the policies, programs and practices of its vendors/contractors are carried out in an equitable fashion and that local (Fulton County, DeKalb County, State of Georgia), small and economically disadvantaged business enterprises are afforded an equitable opportunity to share in contract/subcontract opportunities.

These documents are considered a part of and should be submitted with the qualifications package. Failure to provide the requested information will result in the proposal being determined non-responsive.

- **Screen shot or copy of Vendormate certificate**
- **Completed TIER 1 Diversity form**
- **Certificate verifying TIER 1 diversity.**
- **List of three to five design-build projects of similar size and scale.**
- **Brief narrative of each of the referenced projects.**
- **Organization chart of your team**
- **One page CV or resume of each team member.**

PROCESS FOR SELECTION

A selection team will evaluate each qualification submitted and score the team member. The scores will be made available upon request for your team following pre-qualification

GHS-FD reserves the unqualified right to request additional information or meetings with any architect, engineer, or contractor.

Your company wishes to be pre-qualified as a:

- Architect
- Engineer
- General Contractor

NAME: _____

TITLE: _____

PHONE: () _____

EMAIL: _____

SIGNATURE: _____

DATE: _____