

Grady

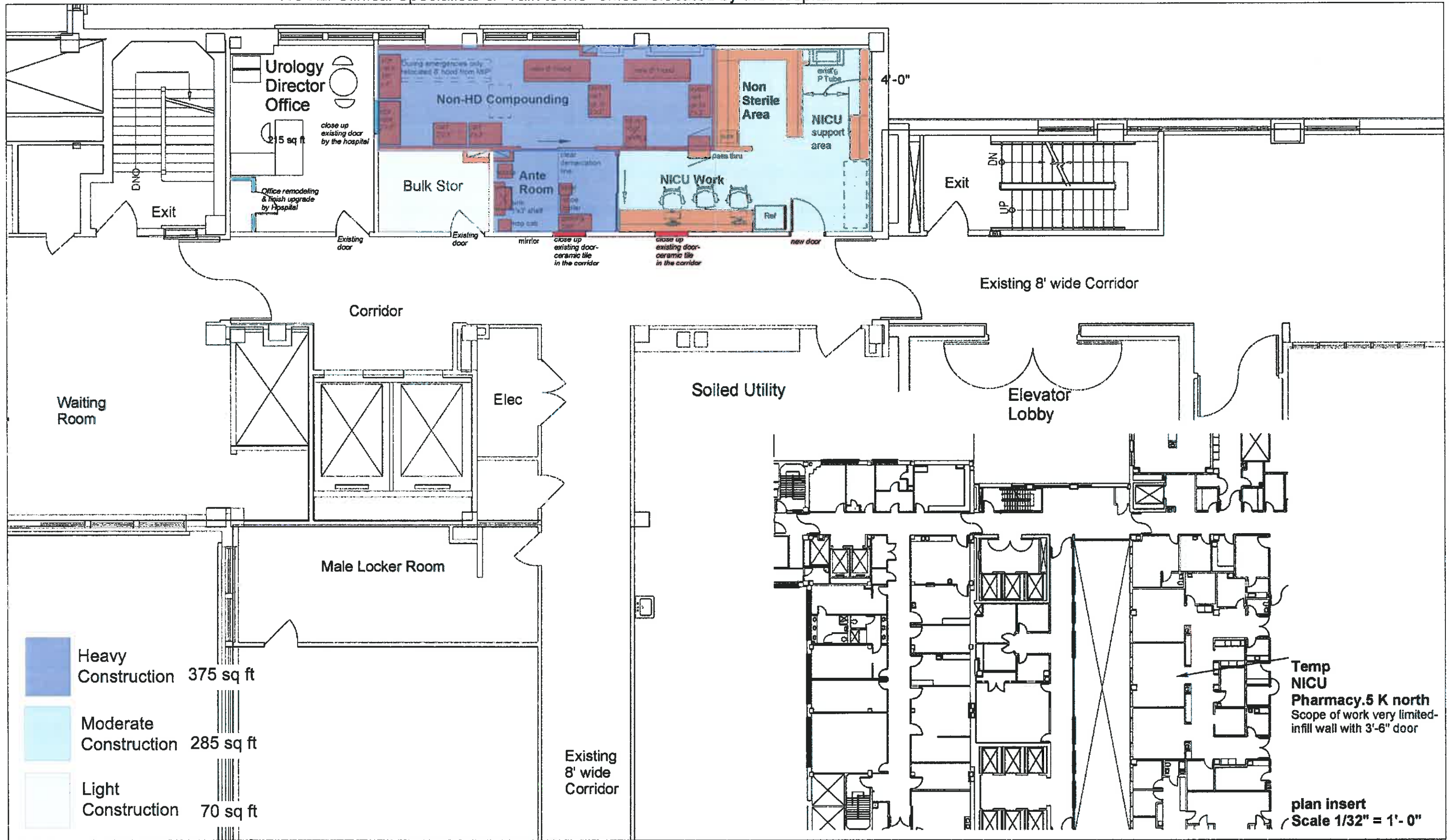
AE Team

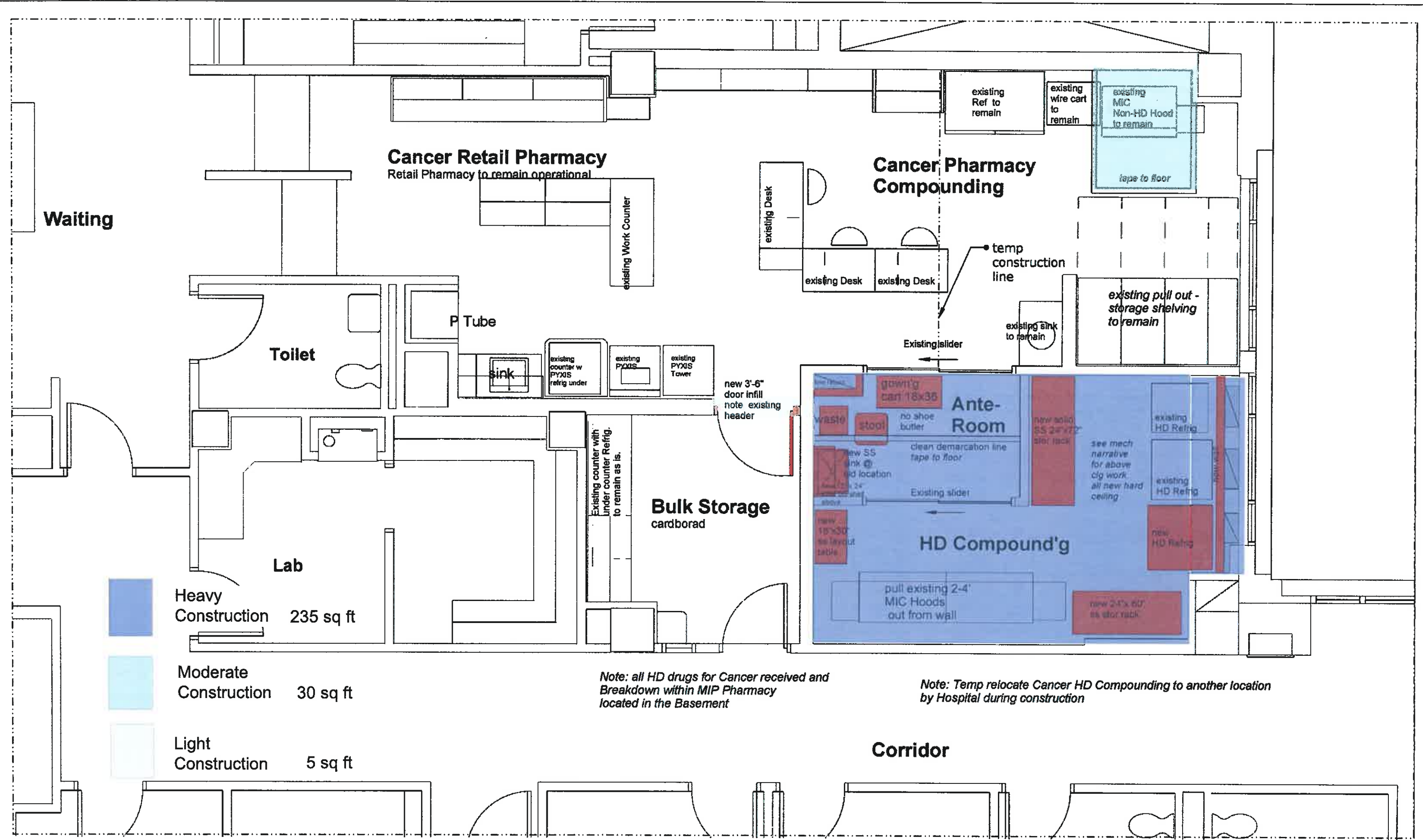
City-Government

CM & sub selection & procurement

Construction

NOTE: Clinical Specialists & "Talk to Me" office relocated by the Hospital





Heavy Construction 235 sq ft

Moderate Construction 30 sq ft

Light Construction 5 sq ft

Note: all HD drugs for Cancer received and Breakdown within MIP Pharmacy located in the Basement

Note: Temp relocate Cancer HD Compounding to another location by Hospital during construction

