

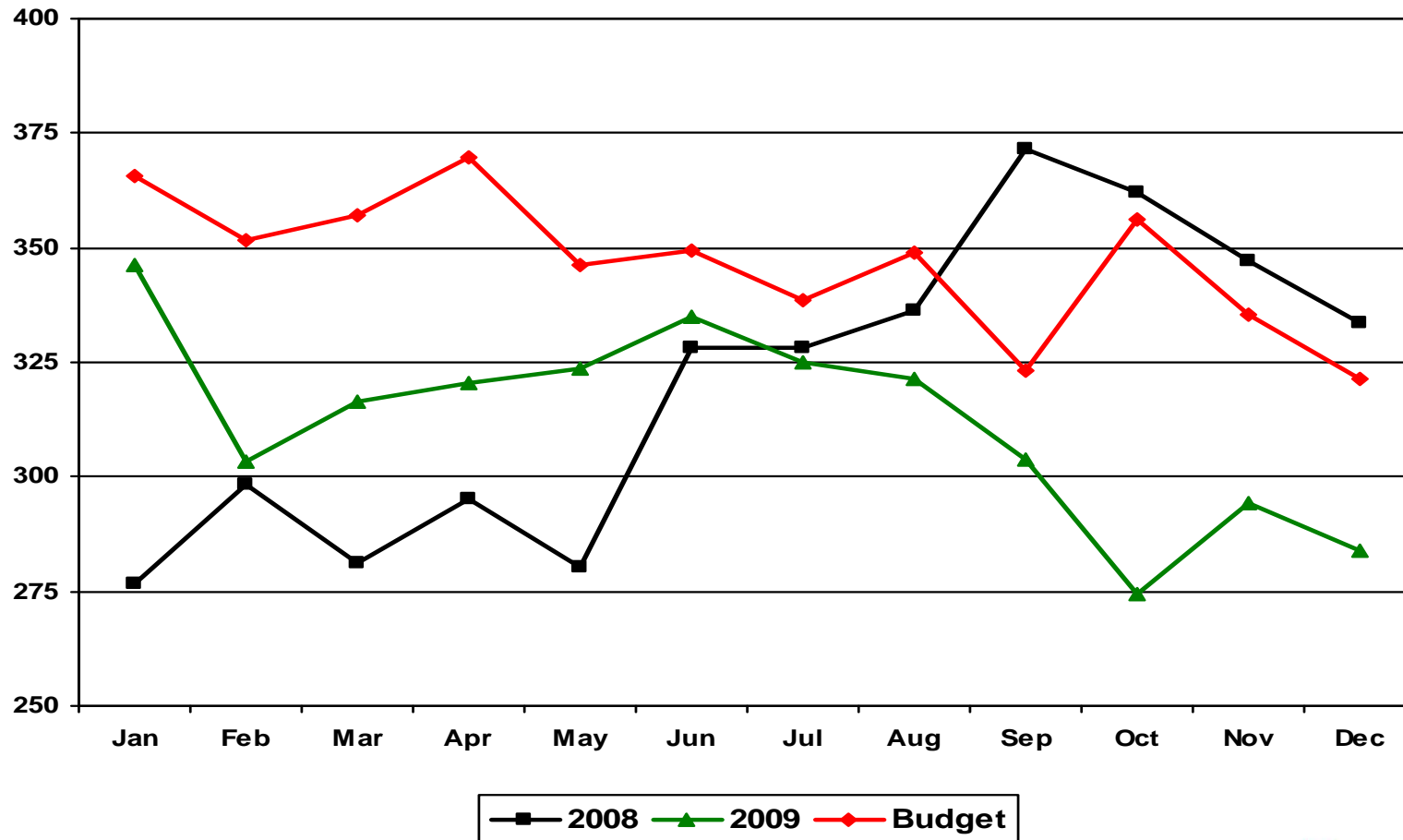


# Financial Report

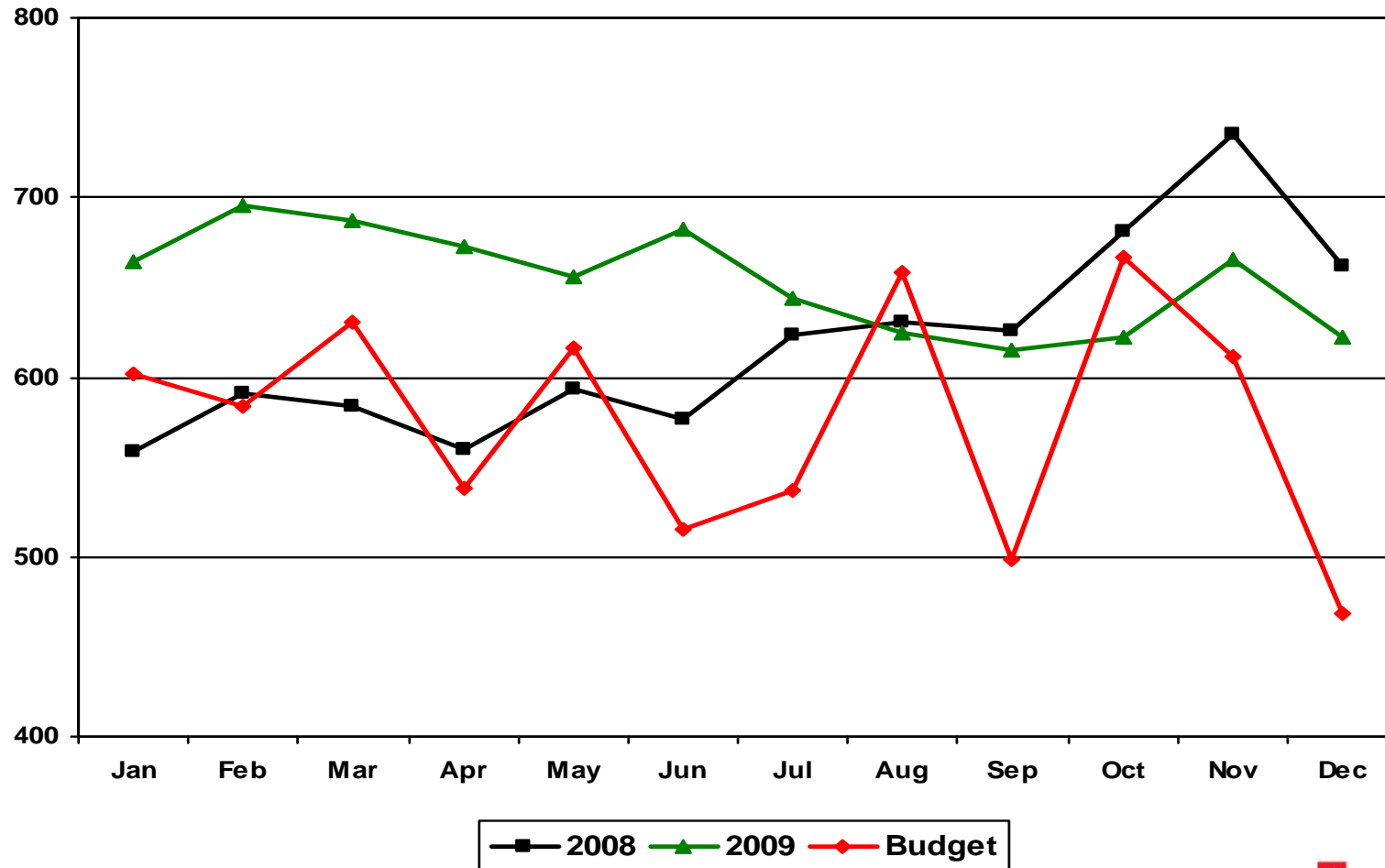
December 2009



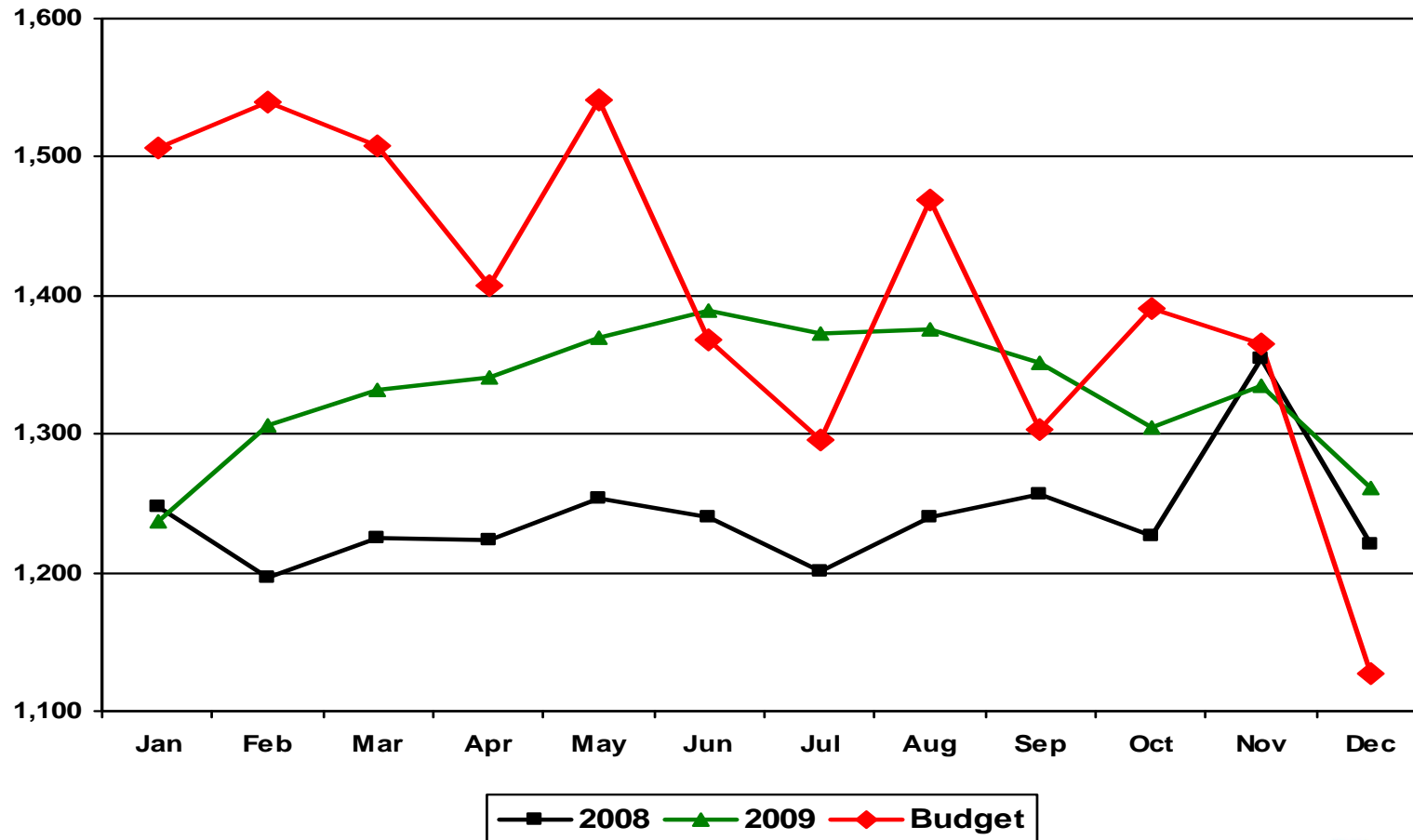
# Average Emergency Visits Per Day



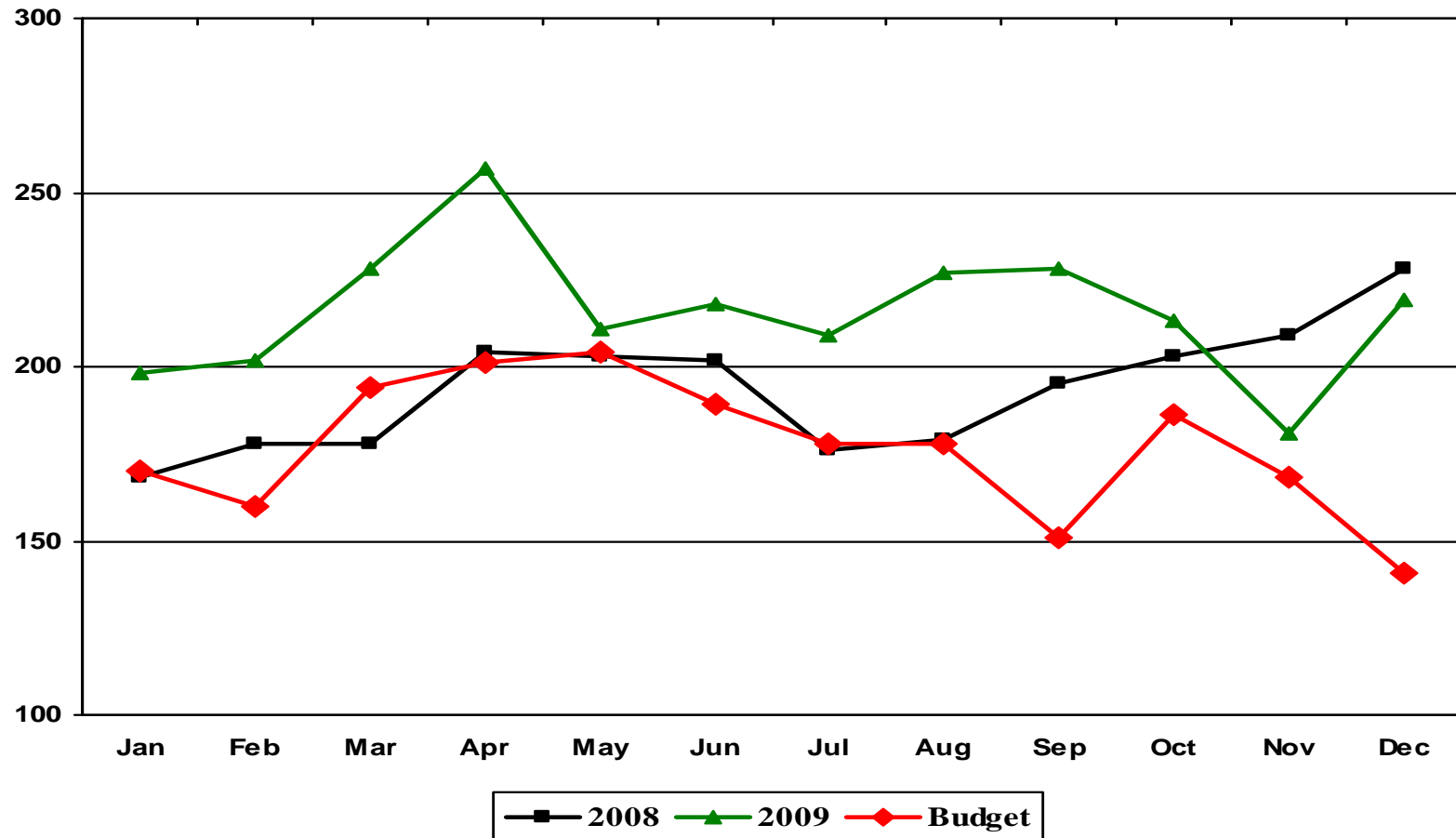
# Average Neighborhood Clinic Visits Per Day



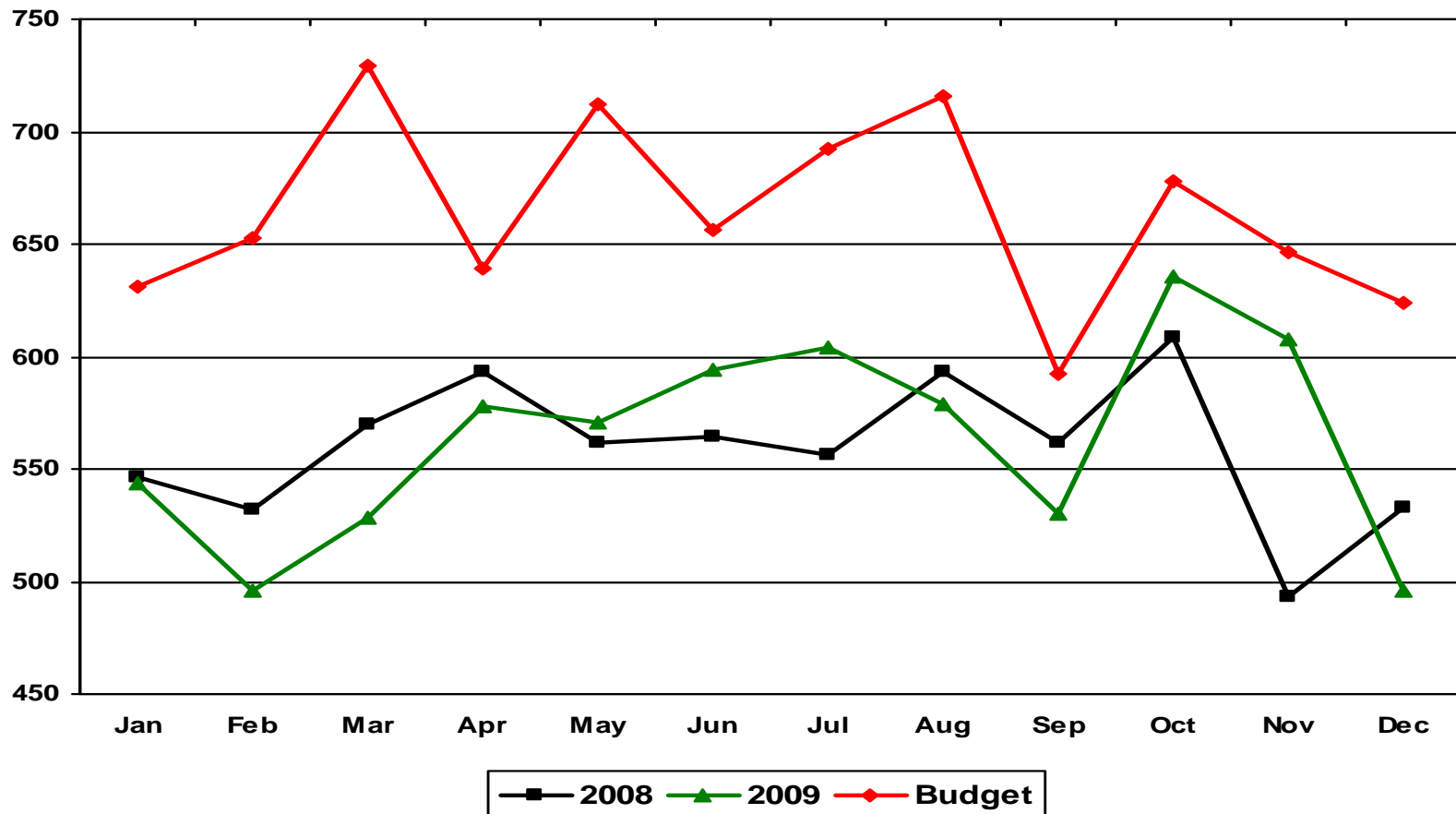
# Average On-Site Clinic Visits Per Day



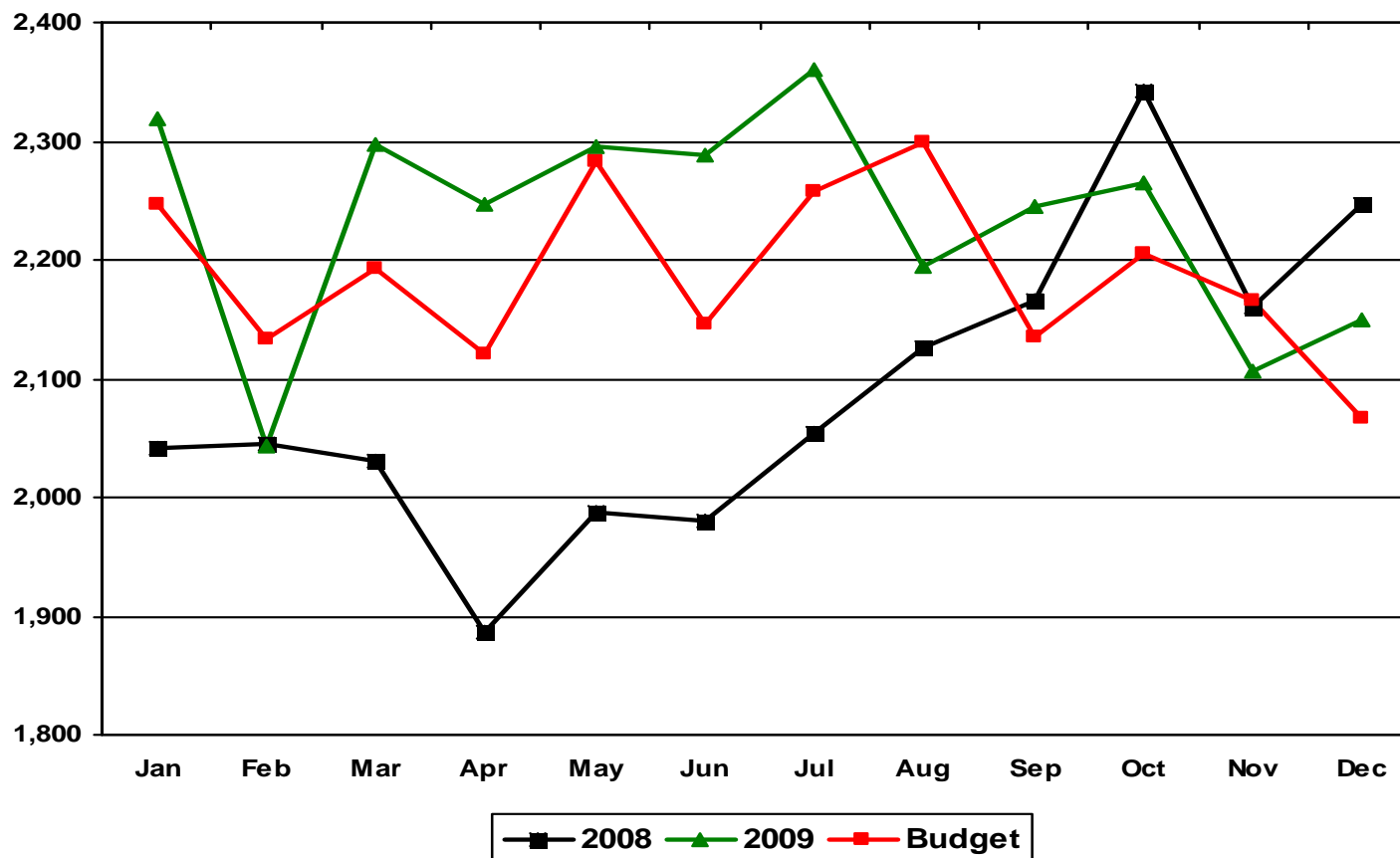
# Outpatient Surgeries



# Inpatient Surgeries



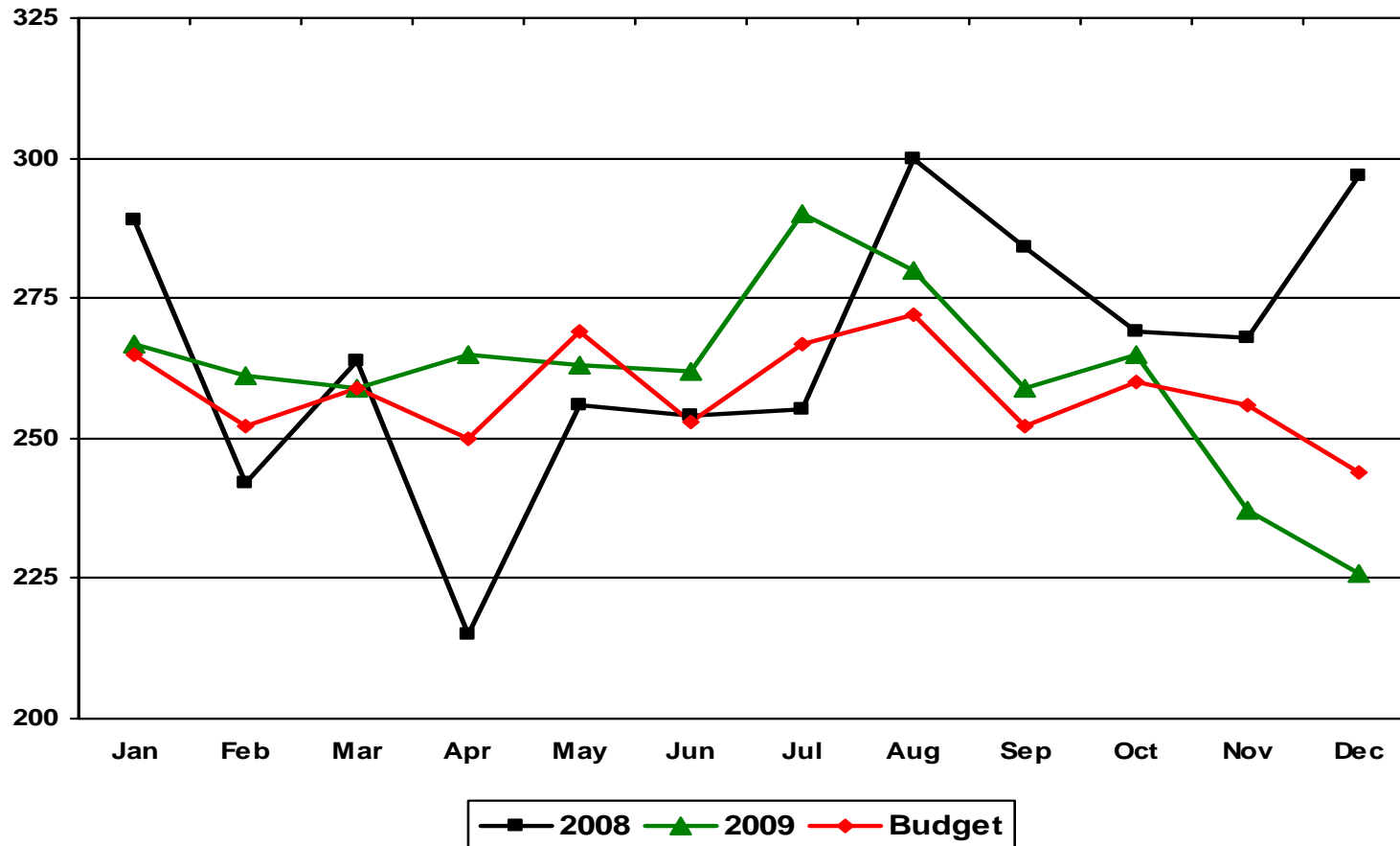
# Total Discharges



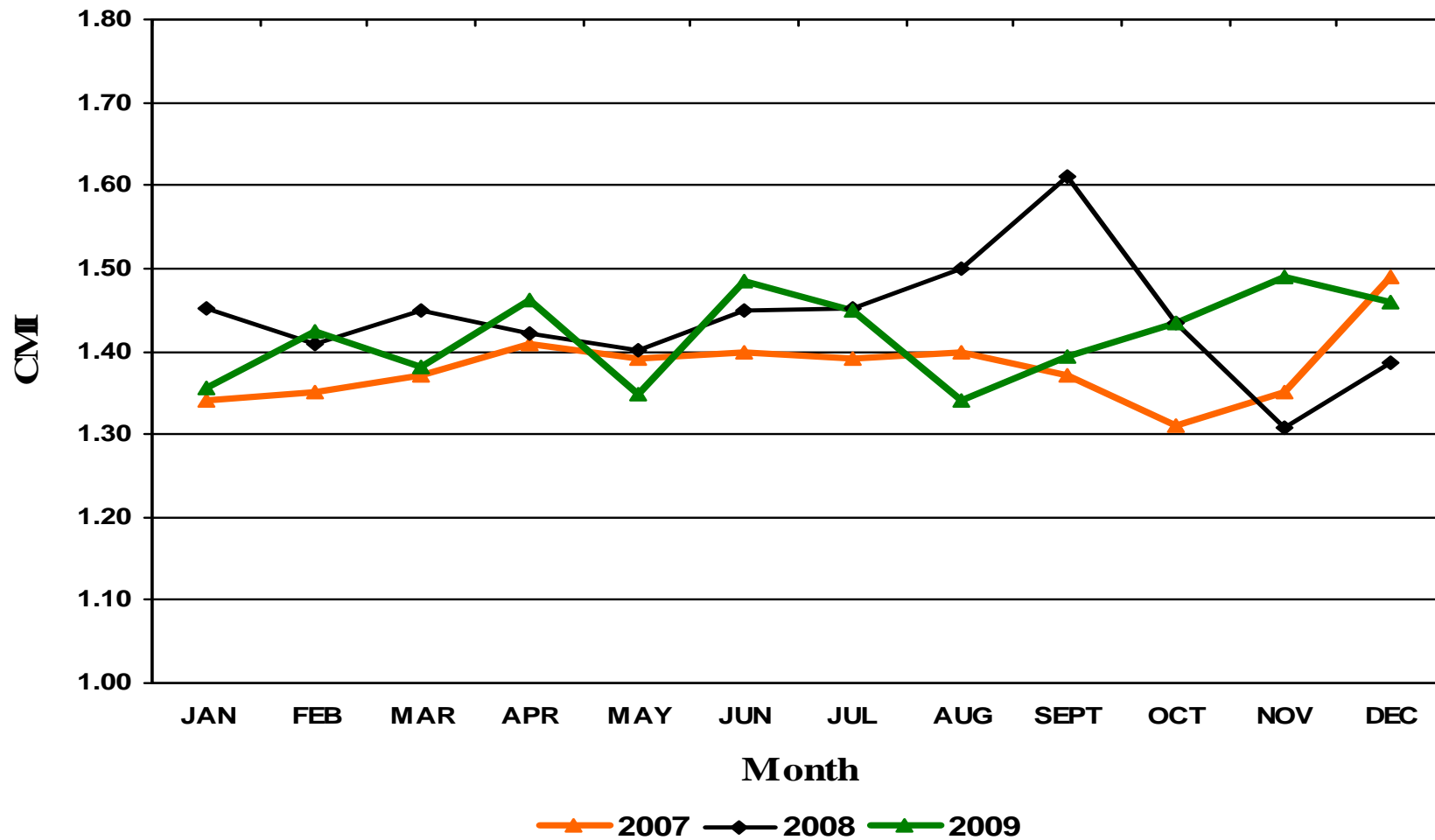
Does not include Normal Newborn



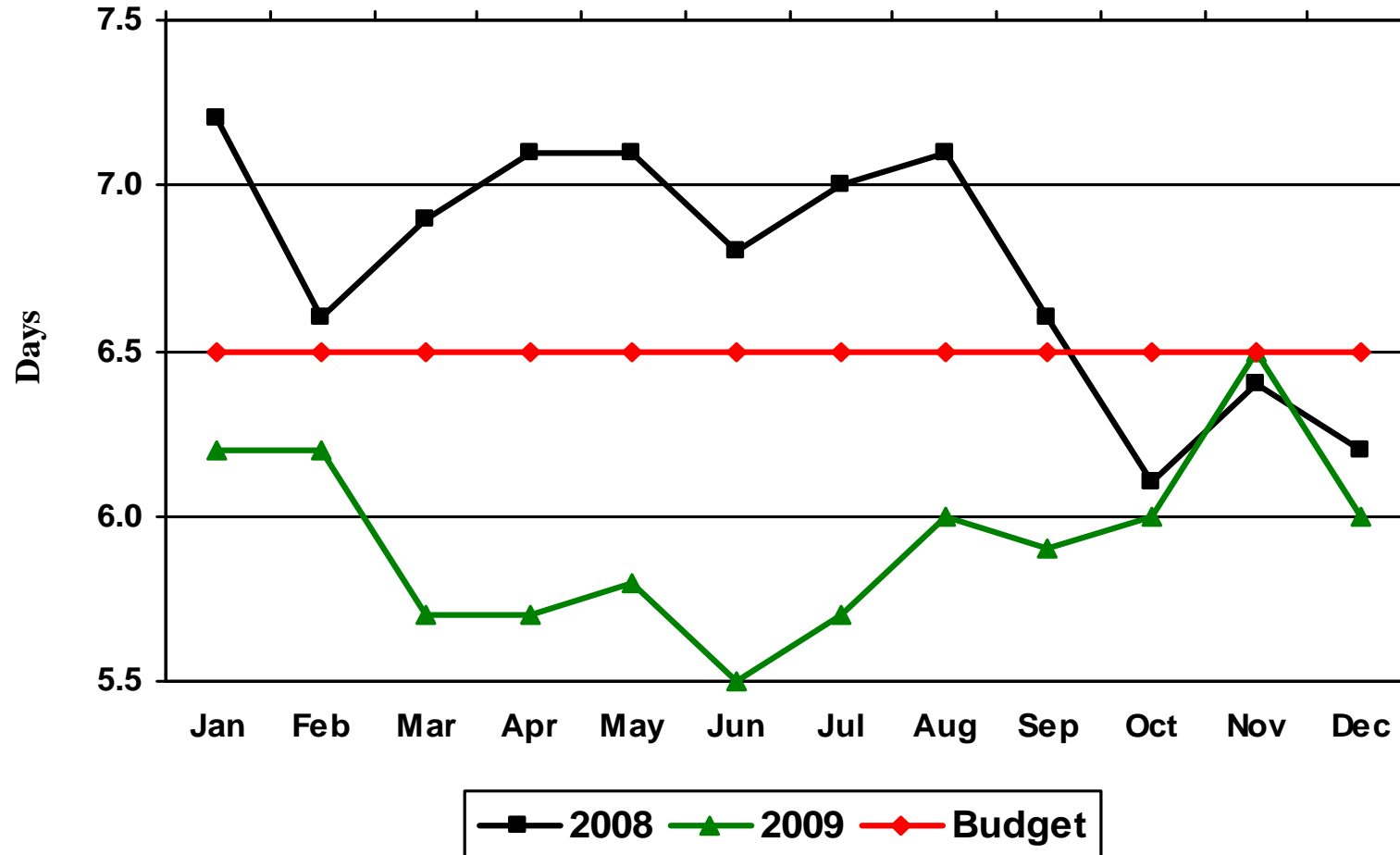
# Deliveries / Live Births



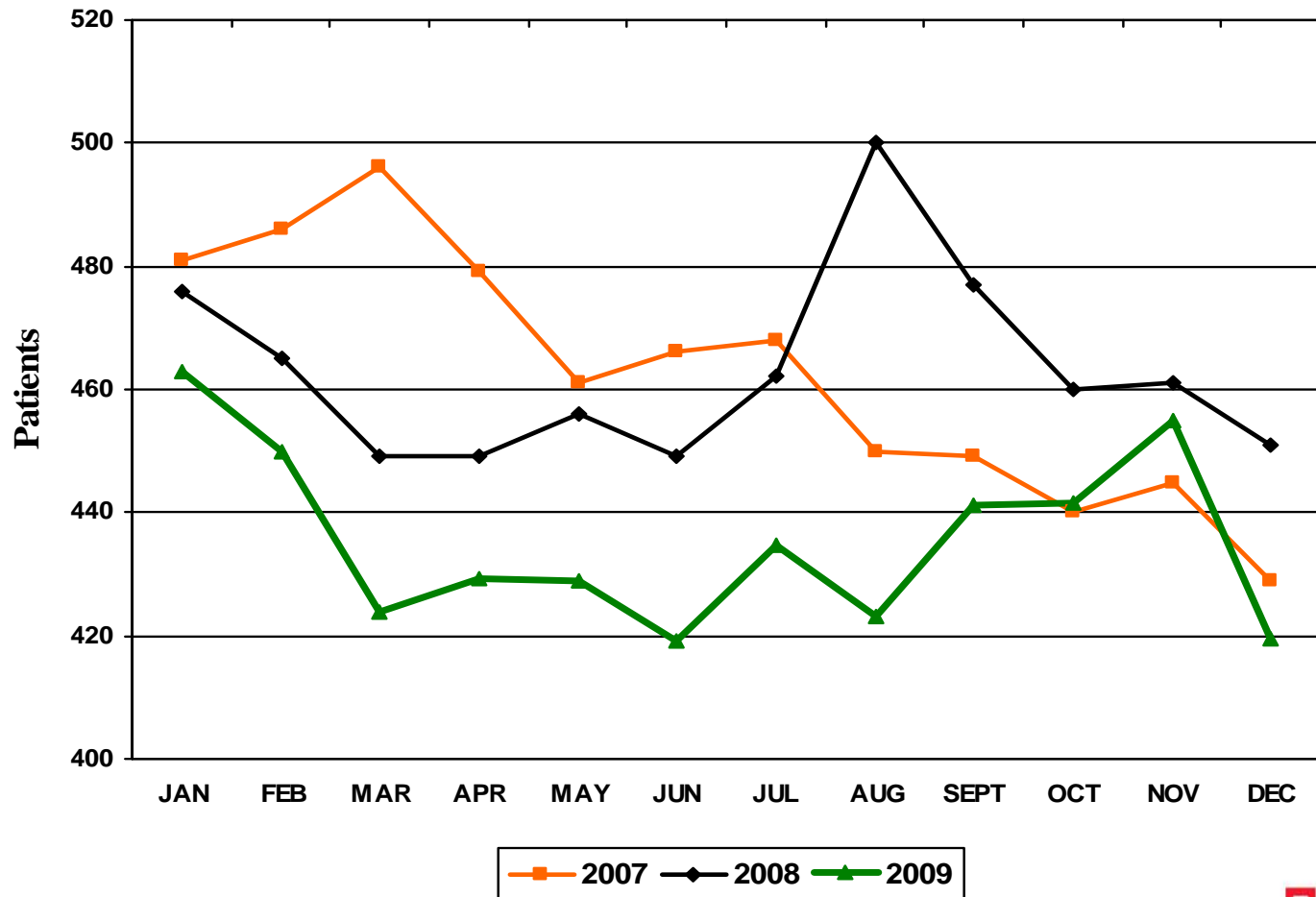
# Overall Case Mix Index



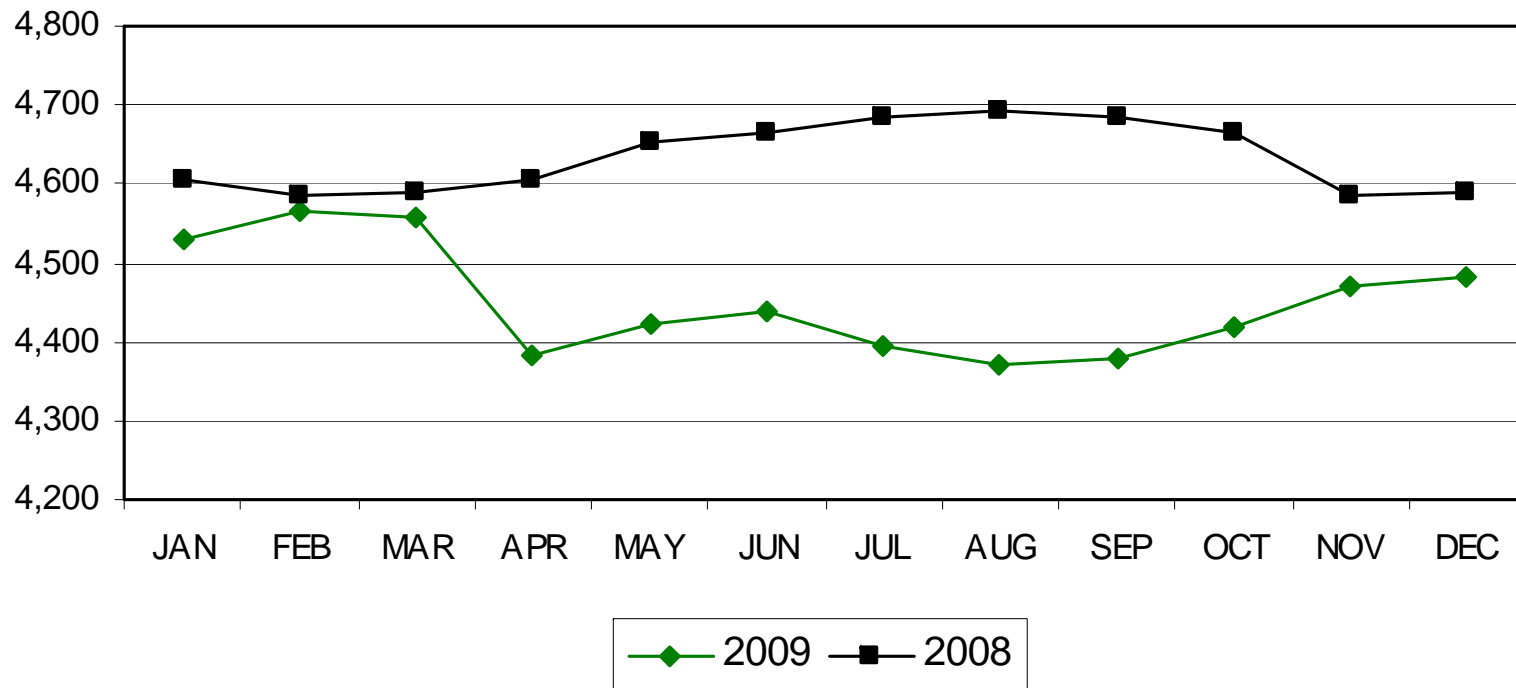
# Average Length of Stay



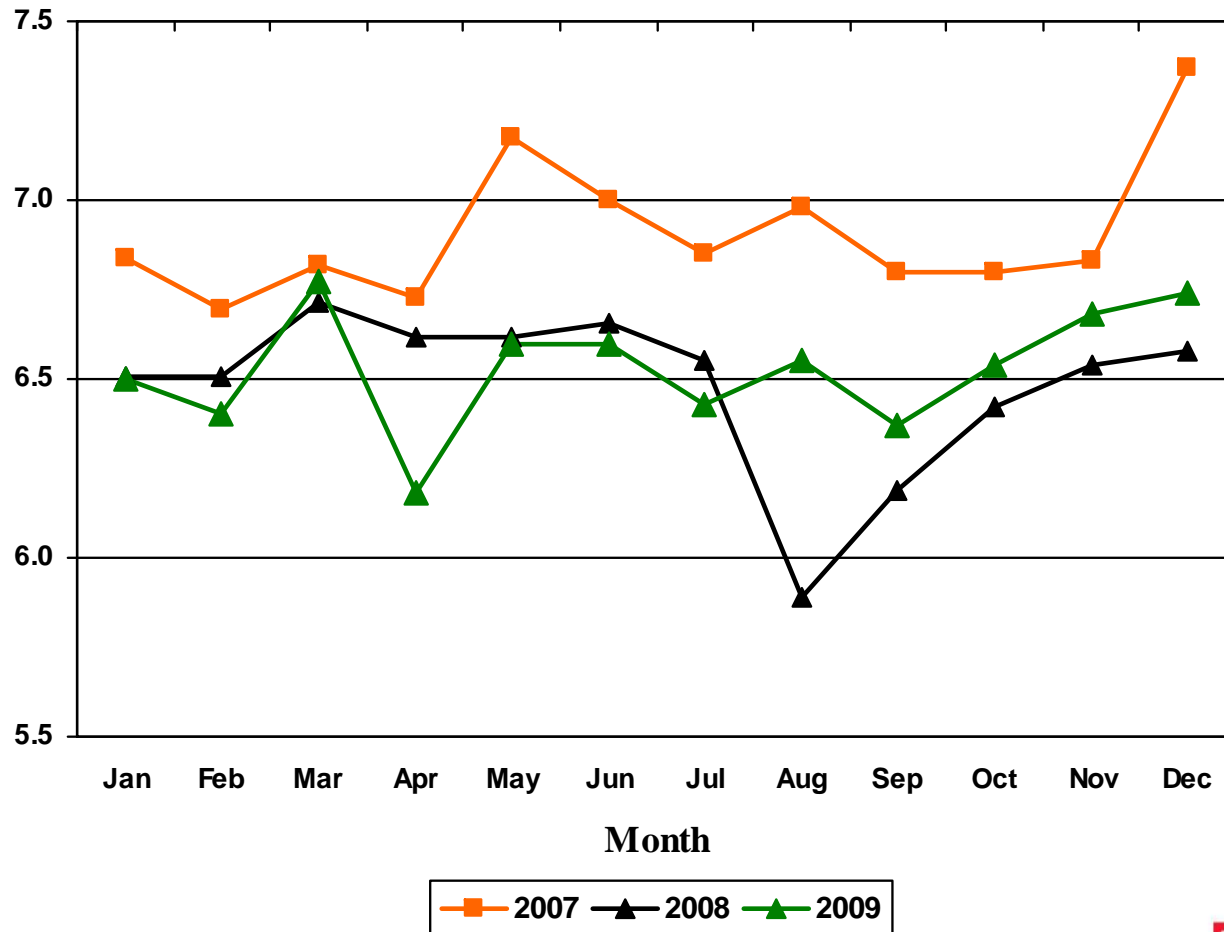
# Average Daily Census



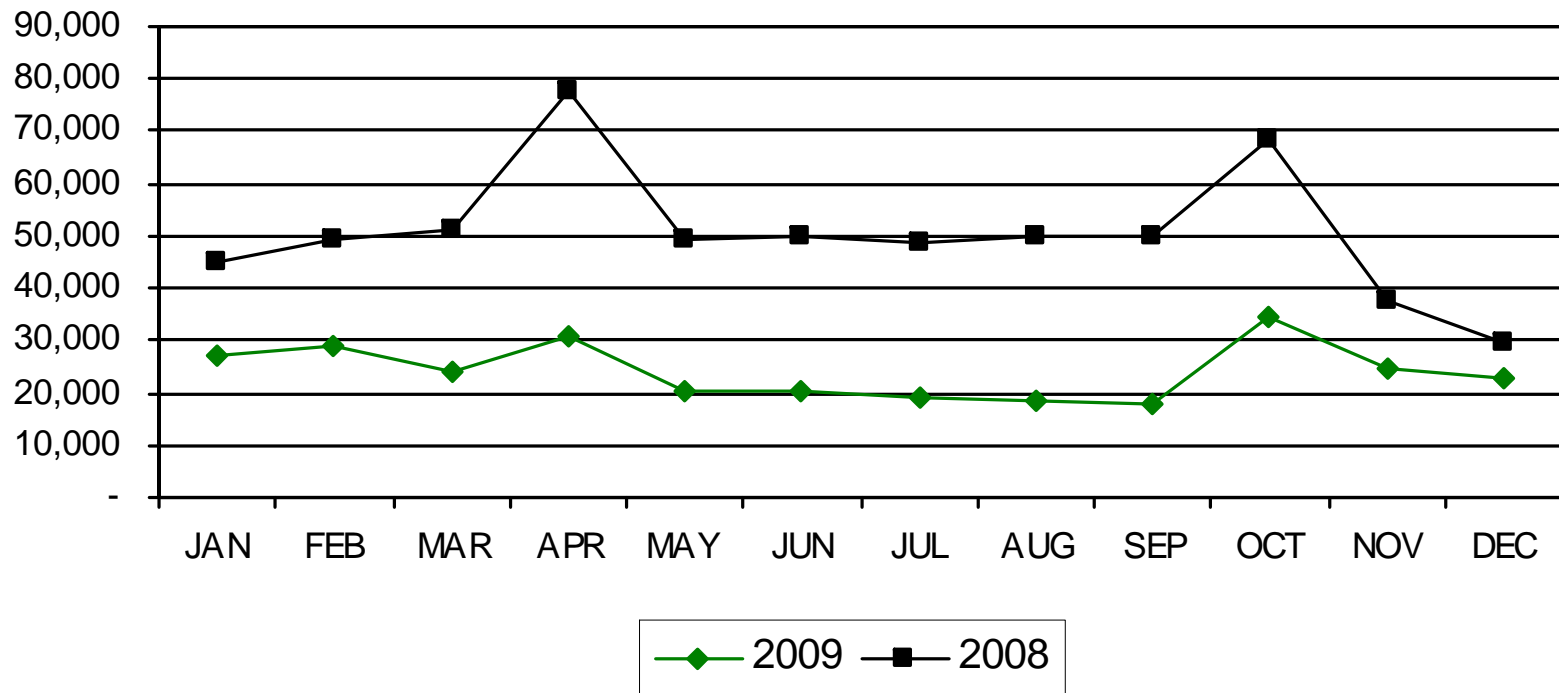
# Monthly Paid FTEs



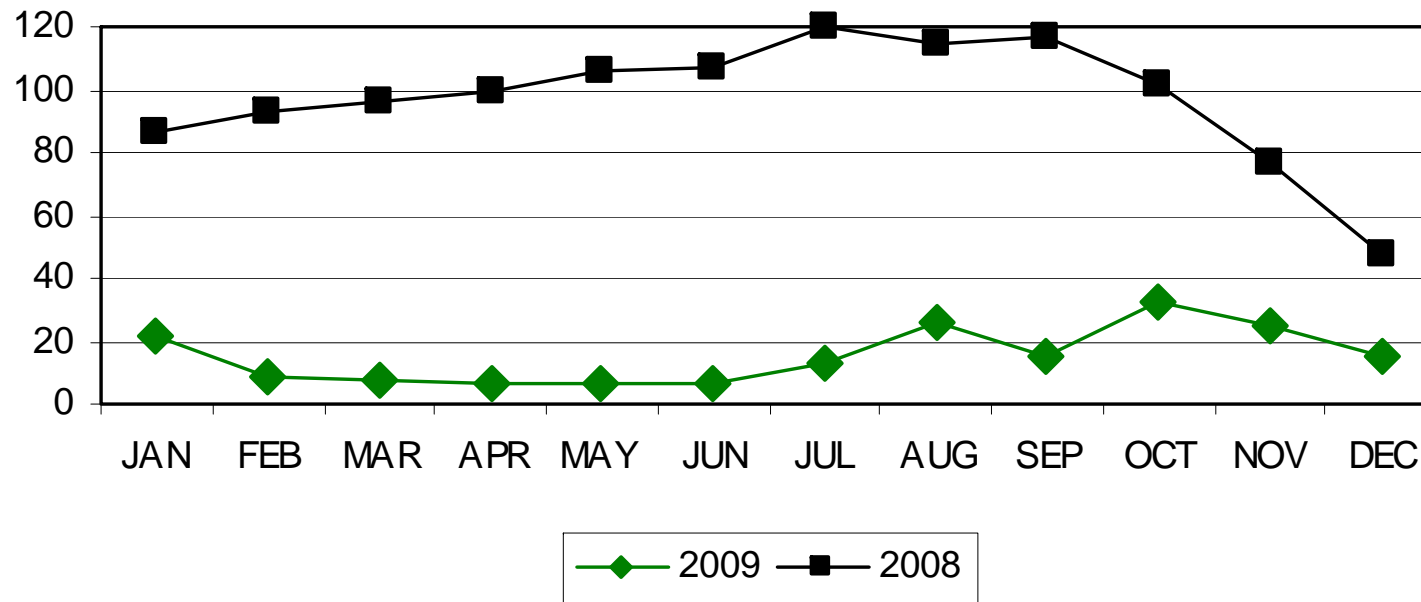
# Paid FTEs Per Adjusted Occupied Bed



# Monthly Overtime Hours

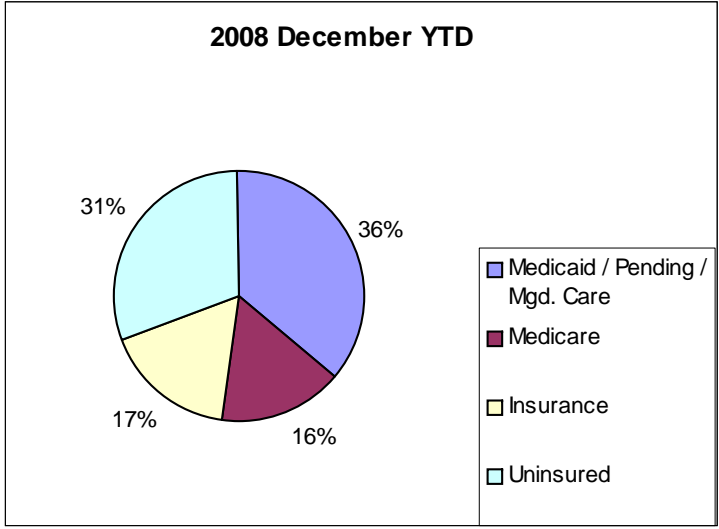
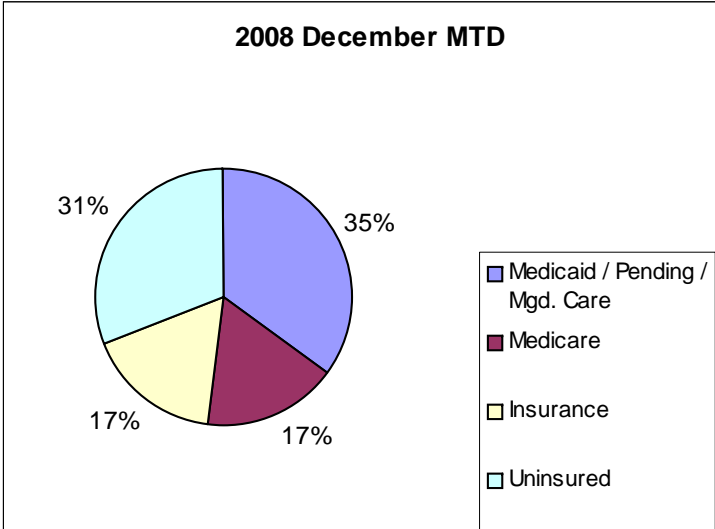
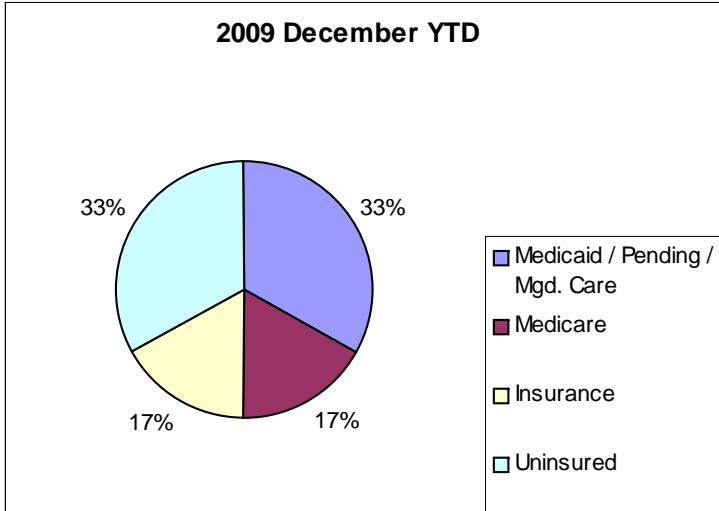
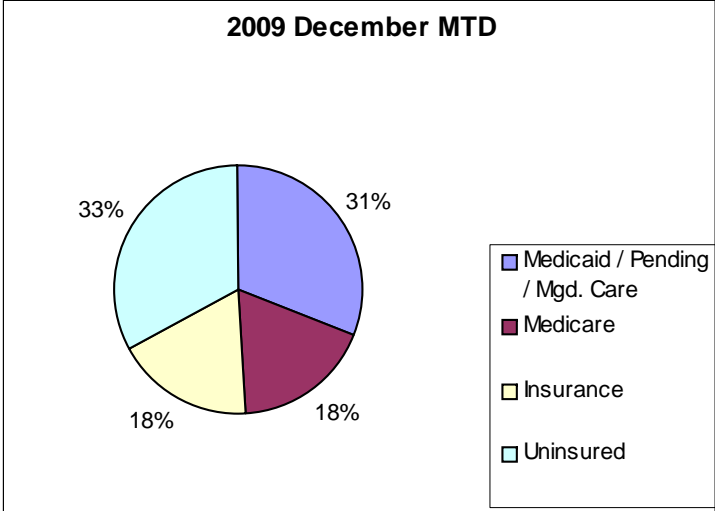


# Agency FTEs by Month



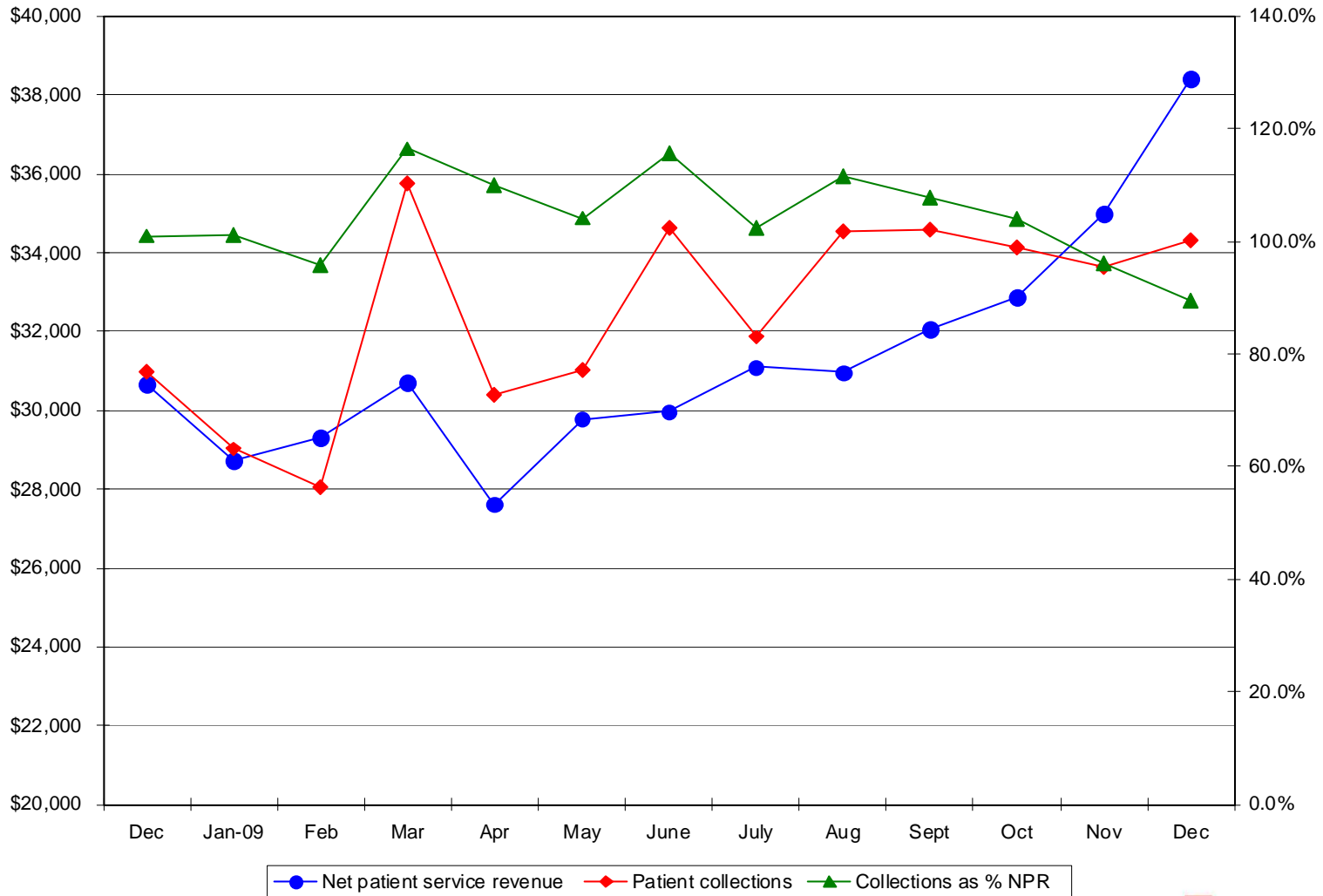
Preliminary

# Payor Mix

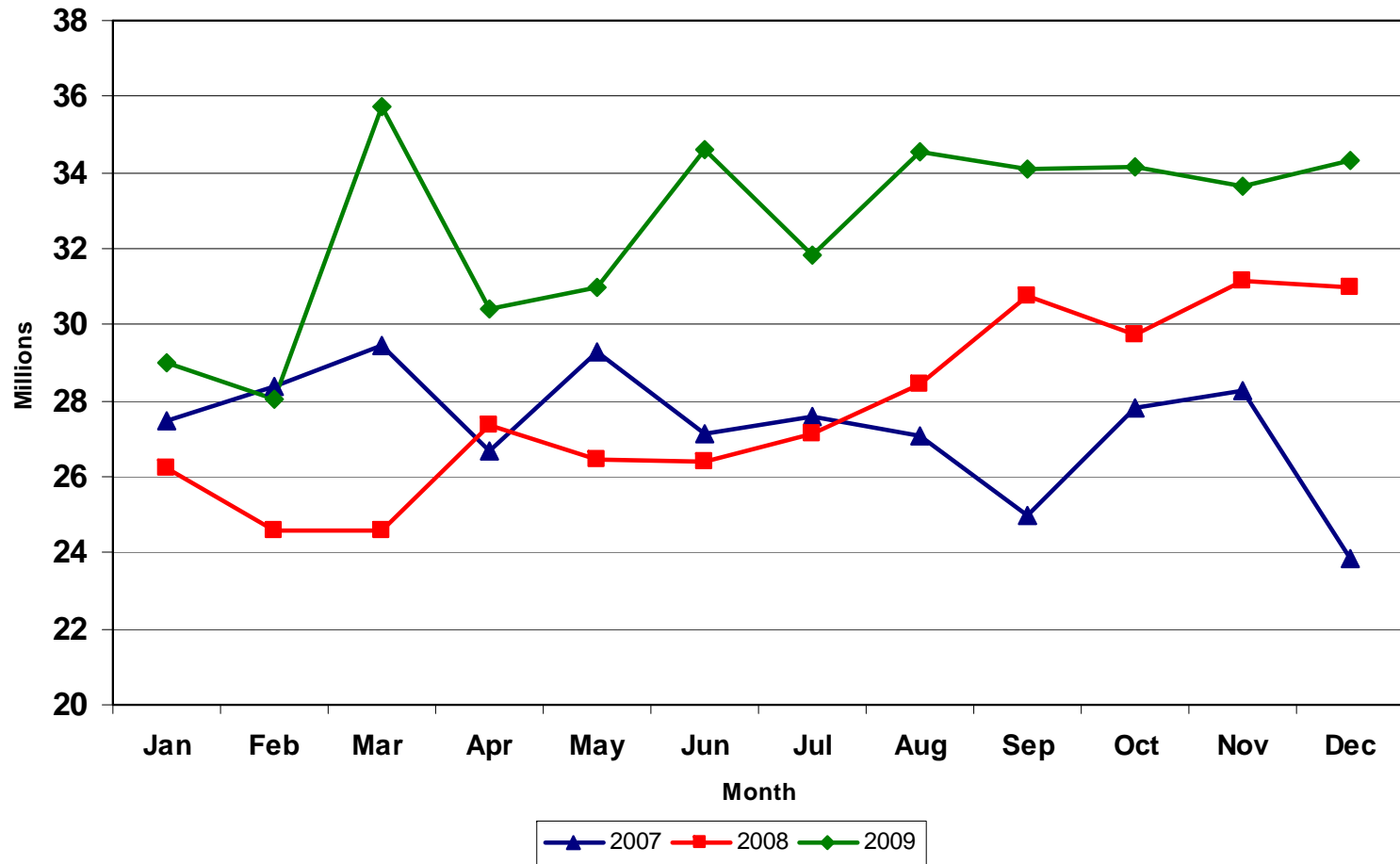


# Cash to Net Revenue Trends

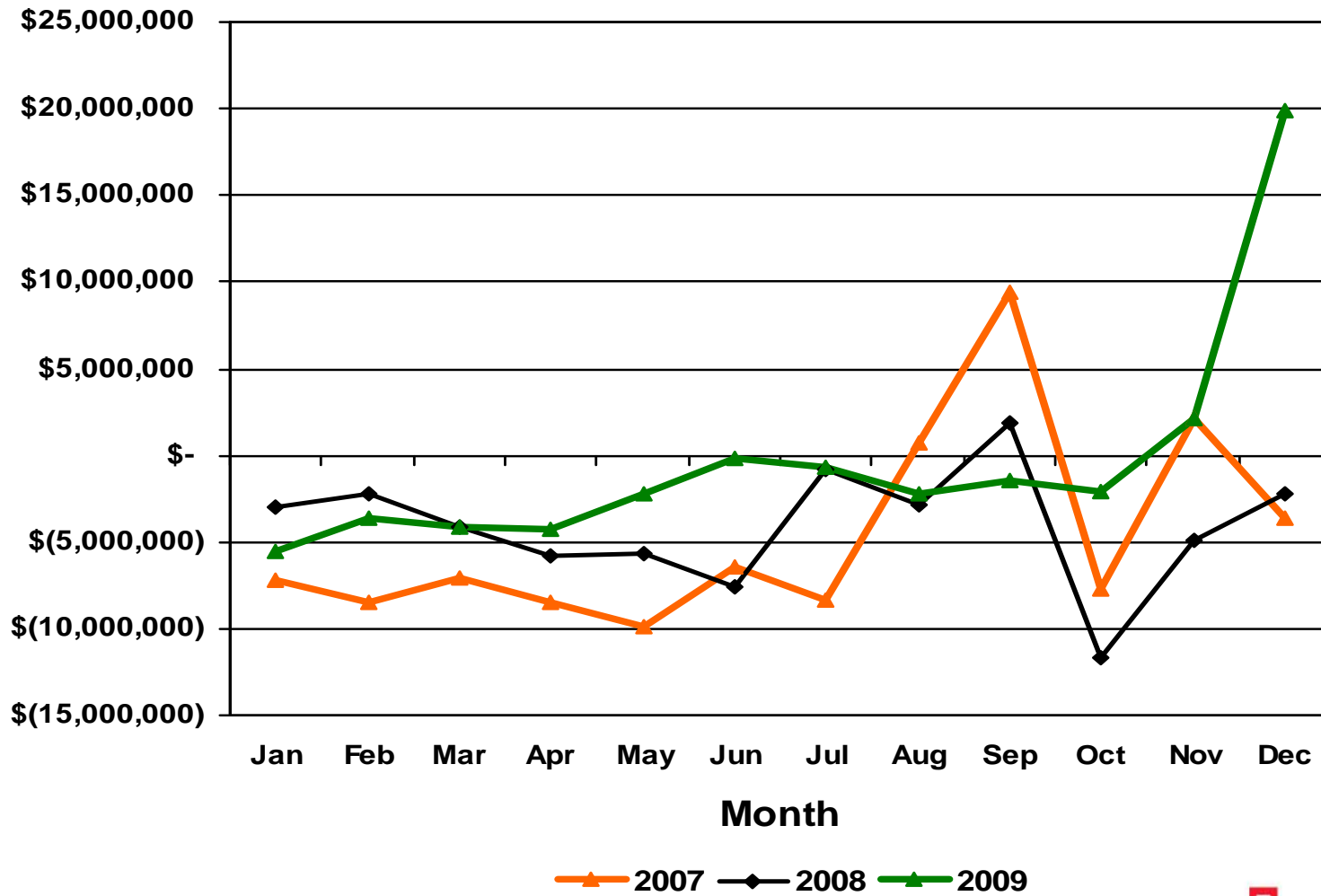
(dollars in thousands)



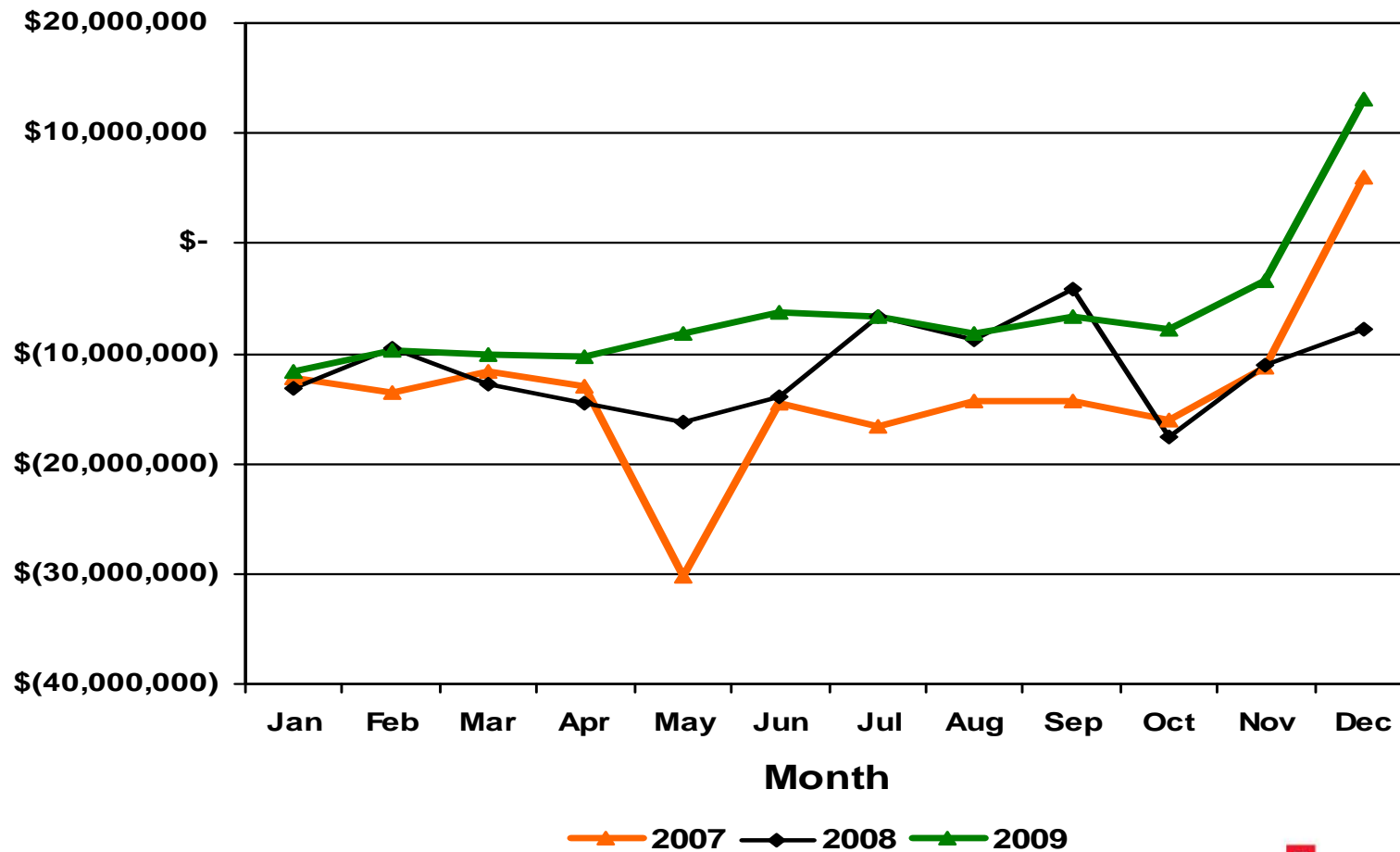
# Cash Collections by Month



# Operating Margin



# Operating Gain/Loss before County Contributions



# Statement of Operations – Consolidated

For the month ending: December 31, 2009 (\$millions)

	2009 MTD	2009 BUDGET	2008 MTD	Pr Yr Variance
Net Patient Service Revenue	38.1	30.5	23.7	14.4
Indigent Care Trust Fund Revenue	9.8	6.0	10.7	-0.9
Grant & Other Revenue	8.9	6.0	7.9	1.0
Total Operating Revenue	<u>56.7</u>	<u>42.5</u>	<u>42.3</u>	<u>14.5</u>
Operating Expenses	43.6	51.5	46.3	2.7
Contractual Payments	-0.2	-0.4	-0.3	0.1
Margin Before County Support	<u>12.9</u>	<u>-9.4</u>	<u>-4.3</u>	<u>17.3</u>
County Contributions	7.0	6.3	6.4	0.6
Operating Margin	<u>19.9</u>	<u>-3.1</u>	<u>2.1</u>	<u>17.8</u>
Nonoperating Income	7.4	0.2	-4.3	11.8
Excess / Shortfall	<u>27.3</u>	<u>-2.9</u>	<u>-2.3</u>	<u>29.6</u>



# Statement of Operations – Consolidated

For the YTD period ending: December 31, 2009 (\$millions)

	2009 YTD	2009 BUDGET	2008 YTD	Pr Yr Variance
Net Patient Service Revenue	376.1	397.7	334.2	41.9
Indigent Care Trust Fund Revenue	76.1	72.3	77.0	-0.9
Grant & Other Revenue	85.7	71.8	89.4	-3.7
Total Operating Revenue	<u>537.8</u>	<u>541.8</u>	<u>500.6</u>	<u>37.2</u>
Operating Expenses	613.6	645.6	632.6	19.0
Contractual Payments	-4.3	-4.6	-3.4	-1.0
Margin Before County Support	<u>-80.1</u>	<u>-108.4</u>	<u>-135.3</u>	<u>55.2</u>
County Contributions	75.7	75.5	90.3	-14.7
Operating Margin	<u>-4.5</u>	<u>-32.9</u>	<u>-45.0</u>	<u>40.5</u>
Nonoperating Income	39.9	2.6	7.8	32.1
Excess / Shortfall	<u>35.4</u>	<u>-30.3</u>	<u>-37.2</u>	<u>72.6</u>



# Cash Flow Summary

For the YTD period ending: December 31, 2009 (\$millions)

	2009 YTD	2008 YTD	Variance
Operating:			
Net asset change excl County	\$ 11.0	209.3	-198.3
County Support	75.7	90.4	-14.7
County (Receivable)/Advance	0.0	-0.1	0.1
Depreciation	27.8	25.7	2.1
Other changes assets/liabilities	-84.1	-143.7	59.5
Cash from operating activity	<u>30.3</u>	<u>181.6</u>	<u>-151.3</u>
Investing:			
Capital acquisitions	-87.8	-35.5	-52.3
Assets whose use is limited	0.0	0.0	0.0
Cash from investing activity	<u>-87.8</u>	<u>-35.5</u>	<u>-52.3</u>
Financing:			
Line of credit borrowing	10.1	0.0	10.1
Repayment of debt	-3.3	-199.2	195.9
Capital contributions	79.6	10.4	69.2
Cash from financing activity	<u>86.4</u>	<u>-188.8</u>	<u>275.2</u>
Net change in cash	<u>28.9</u>	<u>-42.7</u>	<u>71.7</u>



# Outstanding Days in Payables

excluding certain balances

